

LMA Liaison
 The Resident Deputy from the Solano County Sheriff's Department will be the Liaison for the LMAs in Solano County. To reach the Liaison, contact Sheriff's Dispatch at (707) 421-7090. If not available or additional support is needed contact the Solano County OES Duty Officer via Sheriff's Dispatch at the same number.

Communications Plan
Field Command Post
 RD 536 RD 536 District Office, 38° 11'18" N 121° 39'41" W
 3348 Liberty Island Rd.
 RD 2084 RD 2084 District Office, 38° 14'41" N 121° 41'53" W
 4196 Liberty Island Rd.
Communications Equipment
 Cellular telephones available for District personnel. Internet capability available at District field command posts and at farm operations supporting District response. Potential availability of portable radios from Solano County OES through request to the appropriate County Emergency Operations Center.
Internal Communication
 Cell phones will be the primary means of communications between District patrols and command staff. If available, portable radios will provide a secondary means of communications between District patrols and command staff.
Communications with Outside Jurisdictions
 Primary means of communications with other agencies, private vendors, or contractors will be personal cellular telephones and/or land line if functional. Secondary means of communications with other public agencies will be participation in the Solano Operational Area.

Flood Contingency Options
High Water Event
 The flood fight strategy will be to implement RD 536 and 2084 flood safety plans and prepare to implement potential flood contingency options.
Actions
 Establish patrols and emergency facilities in accordance with District Flood Safety Plan.
 Establish communications with outside agencies in accordance with District Flood Safety Plan.
 Confirm access points and develop a movement plan for heavy equipment and trucks to potential problem locations on levees or movement to ends of potential levee breach.
 Review plans for protecting respective District field command posts and critical infrastructure within protected area.
 Consider pre-positioning equipment for completing Steamboat Slough Relief Cut if needed.
Levee Breach on RD536 or RD2084 Levee Systems
 The flood fight strategy will be to armor ends of breach as soon as possible to prevent expansion of breach width, monitor flood flows to attempt to minimize damage to existing drainage systems and critical infrastructure, and protect interior slopes of impacted levees.
Actions
 Armor ends of breach and repair breach as possible.
 Initiate patrols to monitor extension of flood waters to identify opportunities to protect property or contain impounded waters.
 Evaluate District pumps serviceability and the practicality of placing additional pumping capacity at pre-planned locations.
 Protect interior slopes of levees impacted by impounded flood waters.
 Review and prepare to initiate dewatering plan as appropriate.
Overtopping on RD2084 Levee System
 The RD2084 levee system is designed to overtop and flood in accordance to flowage easements as part of the Yolo Bypass. In this case, RD 2084 will begin assisting RD 536 with their flood fight instead.
Actions
 Coordinate with RD 536 to assess extent of damage
 Concentrate flood fight efforts on RD 536 levee system
 Review and prepare to initiate dewatering plan as appropriate

Tactical Facilities
Delivery Points
 SLDP-05 RD 536 Field Command Post, 38° 11'57" N 121° 42'50" W
 3348 Liberty Island Rd.
 SLDP-06 RD 2084 Field Command Post, 38° 14'42" N 121° 41'53" W
 4196 Liberty Island Rd.
Supply Staging Areas
 SLSA-09 RD 536 Field Command Post, 38° 11'57" N 121° 42'50" W
 3348 Liberty Island Rd.
 SLSA-10 RD 2084 Field Command Post, 38° 14'42" N 121° 41'53" W
 4196 Liberty Island Rd.
Helibase
 SLHB-01 Rio Vista Municipal Airport, 38° 11'35" N 121° 41'45" W
 One Main St.
Water Landings
 SLWR-05 Page Balkin's Residence, 38° 11'18" N 121° 39'41" W
 River Rd. north of Real McCoy II Ferry
 SLWR-06 RD 2084 Field Command Post, 38° 14'42" N 121° 41'53" W
 4196 Liberty Island Rd.

Dewatering Plan
General Dewatering Situation
 Floodwaters from a breach or overtopping in RD 2084 will pool in the eastern side of the District against the Cache Slough levee. Impounded waters will eventually fill up the rest of the District. As part of the Yolo Bypass, RD 2084 is expected to overtop and fill in a large flood event.
 Floodwaters from a breach or overtopping anywhere in RD 536 will flow towards the northeast corner of the District. Impounded waters will eventually back up into the rest of the District.
General Dewatering Plan
 General dewatering strategy will be to first armor the ends of the uncontrolled breach to prevent further expansion of its ends. Districts will place emergency pumps at anticipated locations of long-term pooled water (see Annex A - RD 536 and 2084) depending on location and severity of the breach. Once the breach is repaired, dewater impacted area using the emergency pumps. The Districts should also restore drainage systems as possible to facilitate movement of impounded water to pumping locations where it can be transferred to exterior waterways.
 In the case of an overtop and breach in RD 2084, the District will be allowed to become tidally influenced.

Special Considerations
RD2084 Levee System
 The RD2084 levee system is designed to overtop and flood in a large flood event in accordance to flowage easements as part of the Yolo Bypass. In the case that flows in the Yolo Bypass exceed the limited height of the system levees, actions shown in the Flood Contingency Options Text Box will be followed.
Critical Facilities/Gas
 Critical underground gas facilities have been identified on the map where possible, based on best available information. Gas wells are also located at various places. Before any digging occurs, please contact:
 1. Know Before You Dig hotline at 811, or
 2. Gas Call Center Emergency Hotline at 1-800-743-5000

Evacuation Plan
Responsible Agencies
 The following agencies are responsible for alert and warning and evacuation within the District:
 Solano County Office of Emergency Services
 Solano County Sheriff's Department
 Montezuma Fire Protection District
Public Safety Agencies Evacuation Plan
 Public Safety Agency evacuation plans and procedures available at Solano County OES.
 Plans for conducting warning, evacuation and rescue within District maintained by responsible agencies. Implementation coordinated with District through Solano County Sheriff's Department field command post as established (See Solano Operational Area Flood Special Case MIP).
 Farm Equipment Staging Areas: See map for designated areas to move farm equipment in case of evacuation or breach.
Special Levee Breach Procedures
 See map for critical facilities and residences within District for evacuation operations.

Response Activation Triggers

Stage	LMA	Gauge	Elevation (NAVD08)	Action
I	RD536	LIS	13.0 ft	AWARENESS
	RD2084	FRE	32.0 ft	
II	RD536	LIS	19.0 ft	ALERT
	RD2084	FRE	39.5 ft	
	RD2084	LIS	17.6 ft	

NAVD08 - National American Vertical Datum, 1988

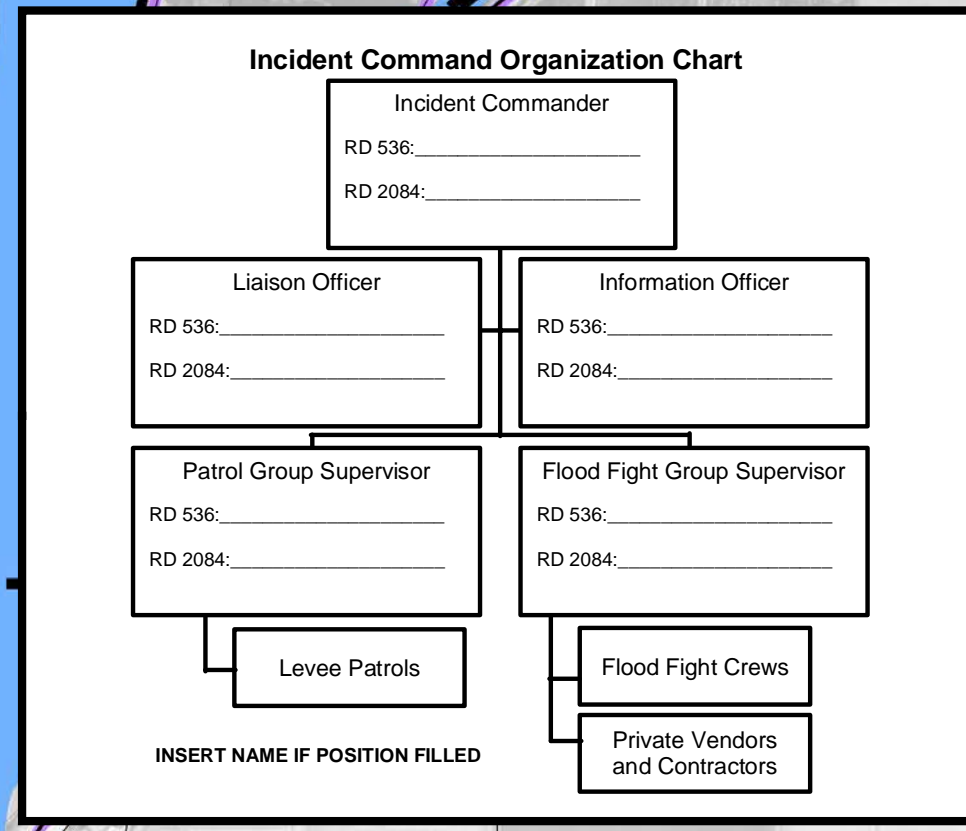
Levee Patrol Plan
Patrol Group Supervisor
 RD536 - District General Manager
 RD2084 - District President/General Manager
Patrol Group Staging Areas
 RD536 - District Field Command Post, 3348 Liberty Island Road
 RD2084 - District Field Command Post, 4196 Liberty Island Road
Organization
 LMA patrol staff will receive **Basic Emergency Levee Worker Course** if needed which includes DWR Levee Threat Monitoring and Marking Protocol. A two-person patrol with LMA authorized vehicle will be organized for each designated patrol sector per District Patrol Standard Operating Procedures (SOP). Patrols will pick up equipment, receive pre-shift briefing and post-shift debriefing at their LMA Patrol Group Staging Area. All patrols will use cell phones for primary communications with Patrol Group Supervisor. Patrol and vehicle equipment will be per SOP.
Patrol Plan
 (See respective RD 536 and 2084 Emergency Operations Plan - Basic Plans for stage definitions and relevant gauges for patrol triggers)
 RD536
 Stage I Monitor: 24-hour scheduled patrol.
 Stage II Flood: Continuous 24-hour patrol.
 RD2084
 Stage I Monitor: 24-hour scheduled patrol.
 Stage II Flood: Continuous 24-hour patrol.
Levee and Staking Protocol - Per DWR Levee Threat Monitoring Guidelines

VALLEY OF THE SACRAMENTO RIVER

0 2,500 5,000
 Feet
 1 inch = 1,000 feet

Time/Date of Start of Incident

Map Version



- Legend**
- 100 Year Flood Elevation
 - Camp
 - Logistics Base
 - Delivery Point
 - Supply Staging Area
 - Water Rescue Launch
 - Helibase
 - Helispot
 - Command Post
 - Historic Seepage
 - Historic Break
 - Planned Relief Cut
 - Historic Erosion
 - Slope Stability
 - Levee Access
 - Levee Gate
 - Planned Emergency Berm
 - Levee
 - Critical Section
 - Dryland Levee
 - Dryland Levee Critical Section
 - Levee Segment (Color varies by LMA)
 - Patrol Sector
 - Owner Elevation Spot Elevation
 - Levee Mile-River Mile-Station
 - Pump Station - Rural
 - Pump Station - Municipal Storm
 - Pump Station - Municipal Sanitary
 - Pump Station - Site for Emergency
 - Flood Control Structure (F - Action Required, - No Action Required)
 - Structure (A-Agricultural, R-Residence, H-Hospital, S-School, F-Fire Station, P-Police Station)
 - Gas Well
 - Water Well
 - Sanitary Sewer Lines
 - Storm Drain Lines
 - Water Lines
 - UG-UG- Underground Lines
 - UG-Fiber- Underground Fiber Optics
 - Overhead Transmission Line
 - Elevation Contour
 - County Boundary
 - District Boundary
 - City Limits
 - Waterways/Channels