



**RECLAMATION
DISTRICT BOARD**

Mark Young
President

Page Baldwin Jr.
Trustee

Matt Gause
Trustee

Richard Harris
Trustee

Marshall Cook
Trustee

AGENDA

**Meeting of the
Reclamation District 2084
Board of Trustees
Thursday, July 7th, 2022
8:30 am**

NOTICE TO THE PUBLIC

MODIFIED BROWN ACT REQUIREMENTS IN LIGHT OF A DECLARED STATE OF EMERGENCY

In Compliance with Government Code section 54953(e) added by Assembly Bill 361, members of the Board of Trustees and members of the public will participate in this meeting by teleconference. The video conferencing and call-in information for the Board of Trustees and the public is as follows:

Meeting Link (via Microsoft Teams):

[Click here to join the meeting](#)

Call in:

1-469-294-4078

Meeting number/access code: 782-136-401#

Any member of the public appearing virtually may speak during Public Comment. The Board of Trustees anticipates conducting all meetings in this manner until further notice. During this period of modified Brown Act Requirements, Reclamation District No. 2084 will use best efforts to swiftly resolve requests for reasonable modifications or accommodations with individuals with disabilities, consistent with the Americans with Disabilities Act, and resolving any doubt whatsoever in favor of accessibility.

1. Call to Order

2. Roll Call and Opening Remarks

3. Modified Brown Act (Action Item)

- a. Consider resolution FY2022/2023-1 proclaiming a local emergency persists, re-ratifying the COVID-19 state of emergency, and re-authorizing remote teleconference meetings.

Enclosure 1: Agenda Item 3.a – Resolution FY2022/2023-1

4. Public Comment (New Business)

This is an opportunity for members of the public to directly address the Board on subject matter not on the agenda within the jurisdiction of the Board.

5. Agenda Approval

6. Consent Items (Action Item)

- a. Approval of Meeting Minutes

1. June 2nd, 2022

Enclosure 2: Agenda Item 6.a.1 – Meeting Minutes

2. June 22nd, 2022

Enclosure 3: Agenda Item 6.a.2 – Meeting Minutes

7. Board Items (Action item unless otherwise noted)

- a. Brown Act and Ethics Training Compliance (Informational Only)
- b. Endorse Caltrans Real McCoy Fender & Ramp Replacement Project Drilling Program Encroachment Permit Application

Enclosure 4: Agenda Item 7.b – Pages from Caltrans Drilling Program Plan

8. Operations and Maintenance Update (Informational/Action Item)

- a. Update from MBK Engineers

Enclosure 5: Agenda Item 8.a – July 2022 Engineer's Report

- b. Ongoing Maintenance Items
- c. Flood Fighting Simulation Event

9. Financial Management (Informational/Action Item)

- a. Invoicing

Enclosure 6: Agenda Item 9.a – June Financial Manager's Report

10. Little Egbert Project Update (Informational Only)

11. Other Reports (Informational Only)

- a. Trustee Report(s)
- b. General Manager's Report
- c. Counsel Report (if needed)

12. Adjourn

- a. The next regular Board meeting is scheduled for August 4th, 2022.

-
- Any documents related to agenda items that are made available to the Board before the meeting will be available for review by the public by contacting info@rd2084.org.
 - If you need reasonable accommodation due to a disability, please contact info@rd2084.org at least 48 hours in advance of the meeting. This contact information may also be used for any questions you may have.
 - Public comments are generally limited to three (3) minutes but may be more or less at the discretion of the Board.
 - The Board may consider the agenda items listed above in a different order at the meeting, pursuant to the determination of the Board Chair. All items appearing on this agenda, whether or not listed expressly for action, may be deliberated upon and subject to action at the discretion of the Board.

ENCLOSURE 1

AGENDA ITEM 3.a

RECLAMATION DISTRICT NO. 2084

RESOLUTION NO. 2022/23 - 1

PROCLAIMING A LOCAL EMERGENCY PERSISTS, RE-RATIFYING THE COVID-19 STATE OF EMERGENCY, AND RE-AUTHORIZING REMOTE TELECONFERENCE MEETINGS OF RECLAMATION DISTRICT 2084 PURSUANT TO THE RALPH M. BROWN ACT.

WHEREAS, RECLAMATION DISTRICT 2084 (RD 2084) is committed to preserving and nurturing public access and participation in meetings of the Board of Trustees; and

WHEREAS, all meetings of the RD 2084 are open and public, as required by the Ralph M. Brown Act (Gov. Code, §§ 54950 – 54963) (“Brown Act”), so that any member of the public may attend, participate, and watch the District’s legislative body conduct its business; and

WHEREAS, Assembly Bill 361 added Government Code section 54953(e) to make provisions for remote teleconferencing participation in meetings by members of a legislative body, without compliance with the requirements of Government Code section 54953(b)(3), subject to the existence of certain conditions; and

WHEREAS, a required condition is that a state of emergency is declared by the Governor pursuant to Government Code section 8625, proclaiming the existence of conditions of disaster or of extreme peril to the safety of persons and property within the state caused by conditions as described in Government Code section 8558; and

WHEREAS, a proclamation is made when there is an actual incident, threat of disaster, or extreme peril to the safety of persons and property within the jurisdictions that are within the District’s boundaries, caused by natural, technological, or human-caused disasters; and

WHEREAS, it is further required that state or local officials have imposed or recommended measures to promote social distancing, or, the legislative body meeting in person would present imminent risks to the health and safety of attendees; and

WHEREAS, the Board of Trustees previously adopted a Resolution, number 2021/22-1 on October 7, 2021, finding that the requisite conditions exist for the District to conduct remote teleconference meetings without compliance with paragraph (3) of subdivision (b) of section 54953; and

WHEREAS, as a condition of extending the use of the provisions found in Section 54953(e), the Board of Trustees must reconsider the circumstances of the state of emergency that exists in the District, and the Board of Trustees has done so; and

WHEREAS, such conditions persist in the District, specifically, the March 4, 2020 State of Emergency Proclamation remains active in California due to the threat of COVID-19; and

WHEREAS, the Board of Trustees does hereby find that the ongoing risk posed by the highly transmissible COVID-19 virus has caused, and will continue to cause, conditions of peril to the safety of persons within the District that are likely to be beyond the control of services, personnel, equipment, and facilities of the District; and

WHEREAS, as a consequence of the local emergency persisting, the Board of Trustees does hereby find that the District shall continue to conduct its meetings without compliance with paragraph (3) of subdivision (b) of Government Code section 54953, as authorized by subdivision (e) of section 54953, and that the Board shall comply with the requirements to provide the public with access to the meetings as prescribed in paragraph (2) of subdivision (e) of section 54953; and

WHEREAS, all meeting agendas, meeting dates, times, and manner in which the public may participate in the public meetings of the District and offer public comment by telephone or internet-based service options including video conference will continue to be posted on the District website and physically outside of the District office.

NOW, THEREFORE, THE BOARD OF TRUSTEES OF RECLAMATION DISTRICT 2084 DOES HEREBY RESOLVE AS FOLLOWS:

Section 1. Recitals. The Recitals set forth above are true and correct and are incorporated into this Resolution by this reference.

Section 2. Affirmation that Local Emergency Exists. The Board has reconsidered the conditions of the state of emergency and proclaims that a local emergency persists throughout the District because the high risk of transmissibility of COVID-19 continues to pose an imminent risk to the safety of persons in the District.

Section 3. Re-ratification of Governor's Proclamation of a State of Emergency. The Board hereby ratifies the Governor of the State of California's Proclamation of State of Emergency, effective as of its issuance date of March 4, 2020.

Section 4. Remote Teleconference Meetings. District staff are hereby authorized and directed to take all actions necessary to carry out the intent and purpose of this Resolution including, conducting open and public meetings in accordance with Government Code section 54953(e) and other applicable provisions of the Brown Act.

Section 5. Effective Date of Resolution. This Resolution shall take effect immediately upon its adoption and shall be effective until the earlier of (i) August 6th, 2022, or such time the Board of Trustees adopts a subsequent resolution in accordance with Government Code section 54953(e)(3) to extend the time during which the District may continue to teleconference without compliance with paragraph (3) of subdivision (b) of section 54953.

PASSED AND ADOPTED by the Board of Trustees of RECLMATION DISTRICT 2084, this ____ day of _____, 2022, by the following vote:

AYES:

NOES:

ABSENT:

ABSTAIN:

ENCLOSURE 2

AGENDA ITEM 6.a.1



**RECLAMATION
DISTRICT BOARD**

Mark Young
President

Page Baldwin Jr.
Trustee

Matt Gause
Trustee

Richard Harris
Trustee

Marshall Cook
Trustee

MINUTES

**Meeting of the
Reclamation District 2084
Board of Trustees
Thursday, June 2nd, 2022
8:30 am**

NOTICE TO THE PUBLIC

MODIFIED BROWN ACT REQUIREMENTS IN LIGHT OF A DECLARED STATE OF EMERGENCY

In Compliance with Government Code section 54953(e) added by Assembly Bill 361, members of the Board of Trustees and members of the public will participate in this meeting by teleconference. The video conferencing and call-in information for the Board of Trustees and the public is as follows:

Meeting Link (via Microsoft Teams):

[Click here to join the meeting](#)

Call in:

1-469-294-4078

Meeting number/access code: 782-136-401#

Any member of the public appearing virtually may speak during Public Comment. The Board of Trustees anticipates conducting all meetings in this manner until further notice. During this period of modified Brown Act Requirements, Reclamation District No. 2084 will use best efforts to swiftly resolve requests for reasonable modifications or accommodations with individuals with disabilities, consistent with the Americans with Disabilities Act, and resolving any doubt whatsoever in favor of accessibility.

1. Call to Order

The meeting was called to order at 8:32am. President Young presided.

2. Roll Call and Opening Remarks

Trustees Present: Mark Young, President

Page Baldwin, Jr.

Marshall Cook

Richard Harris

Trustees Absent: Matt Gause

3. Modified Brown Act (Action Item)

- a. Consider resolution FY2021/2022-12 proclaiming a local emergency persists, re-ratifying the COVID-19 state of emergency, and re-authorizing remote teleconference meetings.

Enclosure 1: Agenda Item 3.a – Resolution FY2021/2022-12

Trustee Harris moved to approve Resolution FY2021/2022-12.

Trustee Cook seconded and it passed by unanimous vote of Trustees present.

AYES: Young, Baldwin, Cook, Harris

NOES: (none)

ABSTAIN: (none)

RECUSE: (none)

4. Public Comment (New Business)

There was no public comment.

5. Agenda Approval

Trustee Harris moved to approve the agenda.

Trustee Cook seconded and it passed by unanimous vote of Trustees present.

AYES: Young, Baldwin, Cook, Harris

NOES: (none)

ABSTAIN: (none)

RECUSE: (none)

6. Consent Items (Action Item)

a. Approval of Meeting Minutes

1. May 5th, 2022

Enclosure 2: Agenda Item 6.a.1 – Meeting Minutes

Trustee Harris moved to approve the consent items.

Trustee Baldwin seconded and it passed by unanimous vote of Trustees present.

AYES: Young, Baldwin, Cook, Harris

NOES: (none)

ABSTAIN: (none)

RECUSE: (none)

7. Board Items (Action item unless otherwise noted)

a. GSRMA 16th Annual Conference (Informational Only)

Secretary Beltran shared known details of the upcoming GSRMA conference.

b. Select date for Special Meeting to extend the State of Emergency resolution.

The Board agreed to a special meeting on June 22nd at 8:30am.

- c. Approve Amendment No. 4 to the Larsen Wurzel and Associates, Inc. contract.

Enclosure 3: Agenda Item 7.c – LWA Amendment No. 4

Trustee Harris moved to approve Amendment No. 4 with LWA.

Trustee Cook seconded and it passed by unanimous vote of Trustees present.

AYES: Young, Baldwin, Cook, Harris

NOES: (none)

ABSTAIN: (none)

RECUSE: (none)

8. Operations and Maintenance Update (Informational/Action Item)

- a. Update from MBK Engineers

Enclosure 4: Agenda Item 8.a – June 2022 Engineer's Report

- b. Ongoing Maintenance Items

Engineer Moncrief presented an update on District engineering. There are some erosion repair sites identified for this summer/fall. The landowner did a boat survey for the District and identified some repair sites on Cache Slough. MBK completed a survey of the sites and estimated quantities of rock needed for repairs. The sites identified are small, and not critical or serious: some sink holes, some debris, and some lower slope erosion. The sink hole repairs will be similar to last year and consist of exploration and regrading.

Engineer Moncrief would like to submit the draft Five Year Plan to DWR. The primary goal of the plan is to note the importance of the subventions plan to the District, and to generally identify the Little Egbert Multi-Benefit Project. President Young said he will finalize his review.

There is no change to the Delta barrier. The False River one is in place and the North Delta ones are not going in this year.

MBK is working with KSN and Yolo County for a delta-wide emergency simulation exercise. The date is set for August 25th. There will also be flood fight training during this time.

9. Financial Management (Informational/Action Item)

- a. Invoicing

Enclosure 5: Agenda Item 9.a – May Financial Manager's Report

Financial Manager Brown provided an update on the District's financial position. The Cropper Accountancy agreement for Audit services has been signed. Financial Manager Brown has requested all invoices for the Fiscal Year be submitted shortly after the end of the month.

b. Adopt Fiscal Year 2022/2023 Budget

Enclosure 6: Agenda Item 9.b – Final Draft Fiscal Year 2022/2023 Budget

Trustee Harris moved to adopt the Fiscal Year 2022/2023 Budget.

Trustee Cook seconded and it passed by unanimous vote of Trustees present.

AYES: Young, Baldwin, Cook, Harris

NOES: (none)

ABSTAIN: (none)

RECUSE: (none)

10. Little Egbert Project Update (Informational Only)

General Manager Nagy gave an update on the Little Egbert Multi-Benefit Project. The amendment with the California Natural Resources Agency is fully executed. The full value of the grant LEJPA received is \$5 million. The contract amendment with the technical team has also been executed.

Discussions with the Department of Water Resources (DWR) on project delivery and strategy are ongoing. An executive meeting was held on May 26th and another is scheduled for this afternoon. Progress is being made, slowly.

General Manager Nagy had a positive discussion with Misty Kaltreider at Solano County. She continues to be supportive of the project and very interested in supporting Rio Vista.

Finally, the Solano Airport Land Use Commission has asked General Manager Nagy to present at the next Commission meeting on June 9th.

11. Other Reports (Informational Only)

a. Trustee Report(s)

Trustee Baldwin: Met with MBK on-site to review areas highlighted for repairs. They do need to be addressed.

President Young: The District is the encroachment permit holder for the geotechnical exploration to advance the LEMBP. This permit also required and received the endorsement of RD 536 to get on the levee. Unfortunately, the property owner of the land adjacent to the levee (landside) has denied the LEJPA contractor's access.

b. General Manager's Report

None

c. Counsel Report (if needed)

None

12. Adjourn

a. The next regular Board meeting is scheduled for July 7th, 2022.

- b. The next special Board meeting is June 22nd, 2022 at 8:30am.
Trustee Harris moved to adjourn the meeting.

Trustee Cook seconded and it passed by unanimous vote of Trustees present.

AYES: Young, Baldwin, Cook, Harris

NOES: (none)

ABSTAIN: (none)

RECUSE: (none)

The meeting adjourned at 9:36am.

-
- Any documents related to agenda items that are made available to the Board before the meeting will be available for review by the public by contacting info@rd2084.org.
 - If you need reasonable accommodation due to a disability, please contact info@rd2084.org at least 48 hours in advance of the meeting. This contact information may also be used for any questions you may have.
 - Public comments are generally limited to three (3) minutes but may be more or less at the discretion of the Board.
 - The Board may consider the agenda items listed above in a different order at the meeting, pursuant to the determination of the Board Chair. All items appearing on this agenda, whether or not listed expressly for action, may be deliberated upon and subject to action at the discretion of the Board.

ENCLOSURE 3

AGENDA ITEM 6.a.2



**RECLAMATION
DISTRICT BOARD**

Mark Young
President

Page Baldwin Jr.
Trustee

Matt Gause
Trustee

Richard Harris
Trustee

Marshall Cook
Trustee

MINUTES

**Special Meeting of the
Reclamation District 2084
Board of Trustees
Wednesday, June 22nd, 2022
8:30 am**

NOTICE TO THE PUBLIC

MODIFIED BROWN ACT REQUIREMENTS IN LIGHT OF A DECLARED STATE OF EMERGENCY

In Compliance with Government Code section 54953(e) added by Assembly Bill 361, members of the Board of Trustees and members of the public will participate in this meeting by teleconference. The video conferencing and call-in information for the Board of Trustees and the public is as follows:

Meeting Link (via Microsoft Teams):

[Click here to join the meeting](#)

Call in:

1-469-294-4078

Meeting number/access code: 345-821-027#

Any member of the public appearing virtually may speak during Public Comment. The Board of Trustees anticipates conducting all meetings in this manner until further notice. During this period of modified Brown Act Requirements, Reclamation District No. 2084 will use best efforts to swiftly resolve requests for reasonable modifications or accommodations with individuals with disabilities, consistent with the Americans with Disabilities Act, and resolving any doubt whatsoever in favor of accessibility.

1. Call to Order

The meeting was called to order at 8:30am. President Young presided.

2. Roll Call and Opening Remarks

Trustees Present: Mark Young, President

Matt Gause

Richard Harris

Trustees Absent: Page Baldwin, Jr.

Marshall Cook

3. Modified Brown Act (Action Item)

- a. Consider resolution 2021/2022-13 proclaiming a local emergency persists, re-ratifying the COVID-19 state of emergency, and re-authorizing remote teleconference meetings.

Enclosure 1: Agenda Item 3.a – Resolution 2021/2022-13

Trustee Harris moved to approve Resolution 2021/2022-13.

Trustee Gause seconded and it passed by unanimous vote of Trustees present.

AYES: Young, Gause, Harris

NOES: (none)

ABSTAIN: (none)

RECUSE: (none)

4. Public Comment (New Business)

There was no public comment.

5. Adjourn

- a. The next regular Board meeting is scheduled for July 7th, 2022.

Trustee Harris moved to adjourn the meeting.

Trustee Gause seconded and it passed by unanimous vote of Trustees present.

AYES: Young, Gause, Harris

NOES: (none)

ABSTAIN: (none)

RECUSE: (none)

-
- Any documents related to agenda items that are made available to the Board before the meeting will be available for review by the public by contacting info@rd2084.org.
 - If you need reasonable accommodation due to a disability, please contact info@rd2084.org at least 48 hours in advance of the meeting. This contact information may also be used for any questions you may have.
 - Public comments are generally limited to three (3) minutes but may be more or less at the discretion of the Board.
 - The Board may consider the agenda items listed above in a different order at the meeting, pursuant to the determination of the Board Chair. All items appearing on this agenda, whether or not listed expressly for action, may be deliberated upon and subject to action at the discretion of the Board.

ENCLOSURE 4

AGENDA ITEM 7.b



STATE OF CALIFORNIA
DEPARTMENT OF TRANSPORTATION
Division of Engineering Services
Office of Geotechnical Design - West

DRILLING PROGRAM PLAN

REAL McCOY FENDER & RAMP REPLACEMENT
SOLANO COUNTY, CALIFORNIA

04 - SOL- 84 - PM 2.49
Project ID: 0413000081
EA: 04-4H060
June 2022

PREPARED FOR:

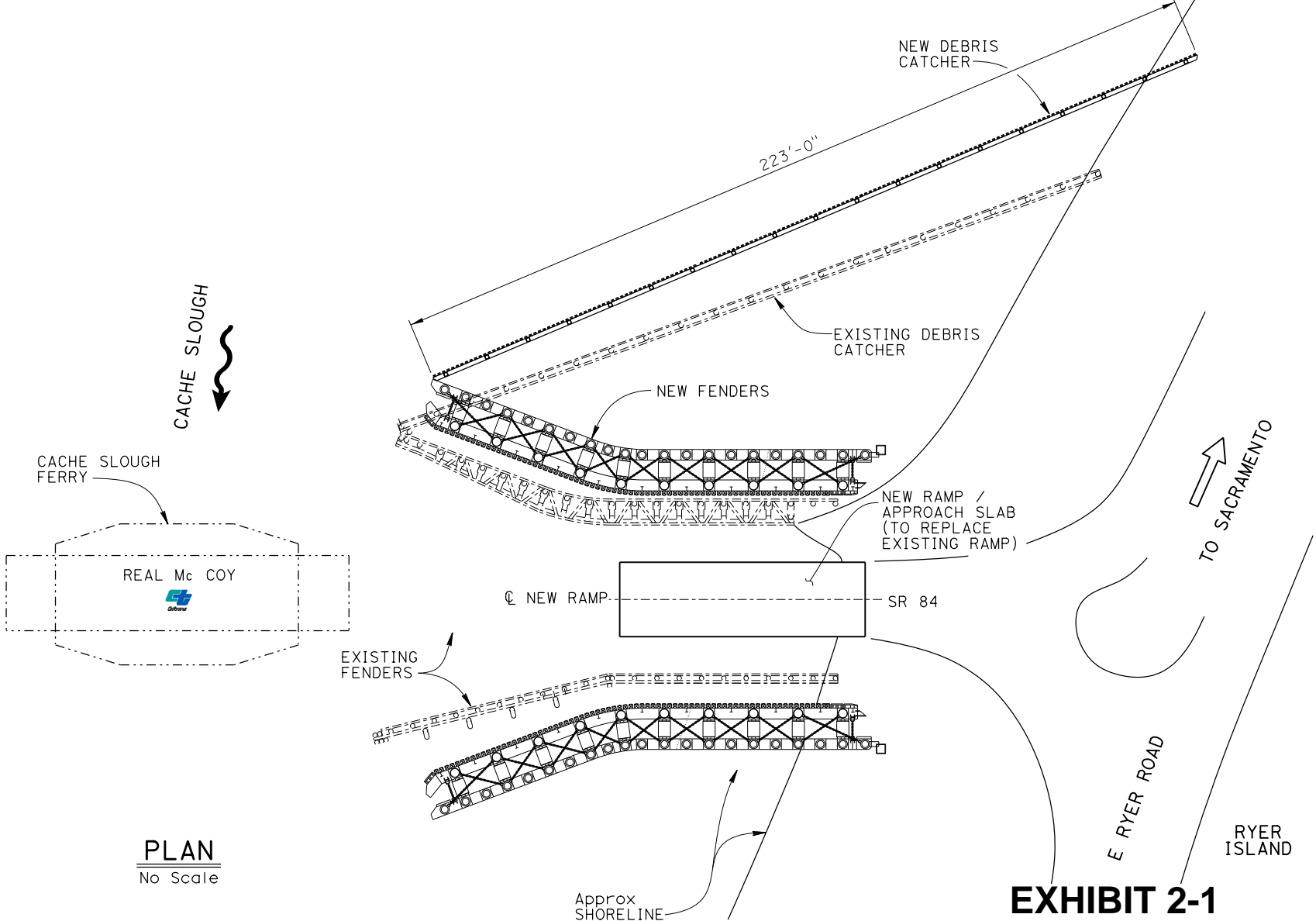
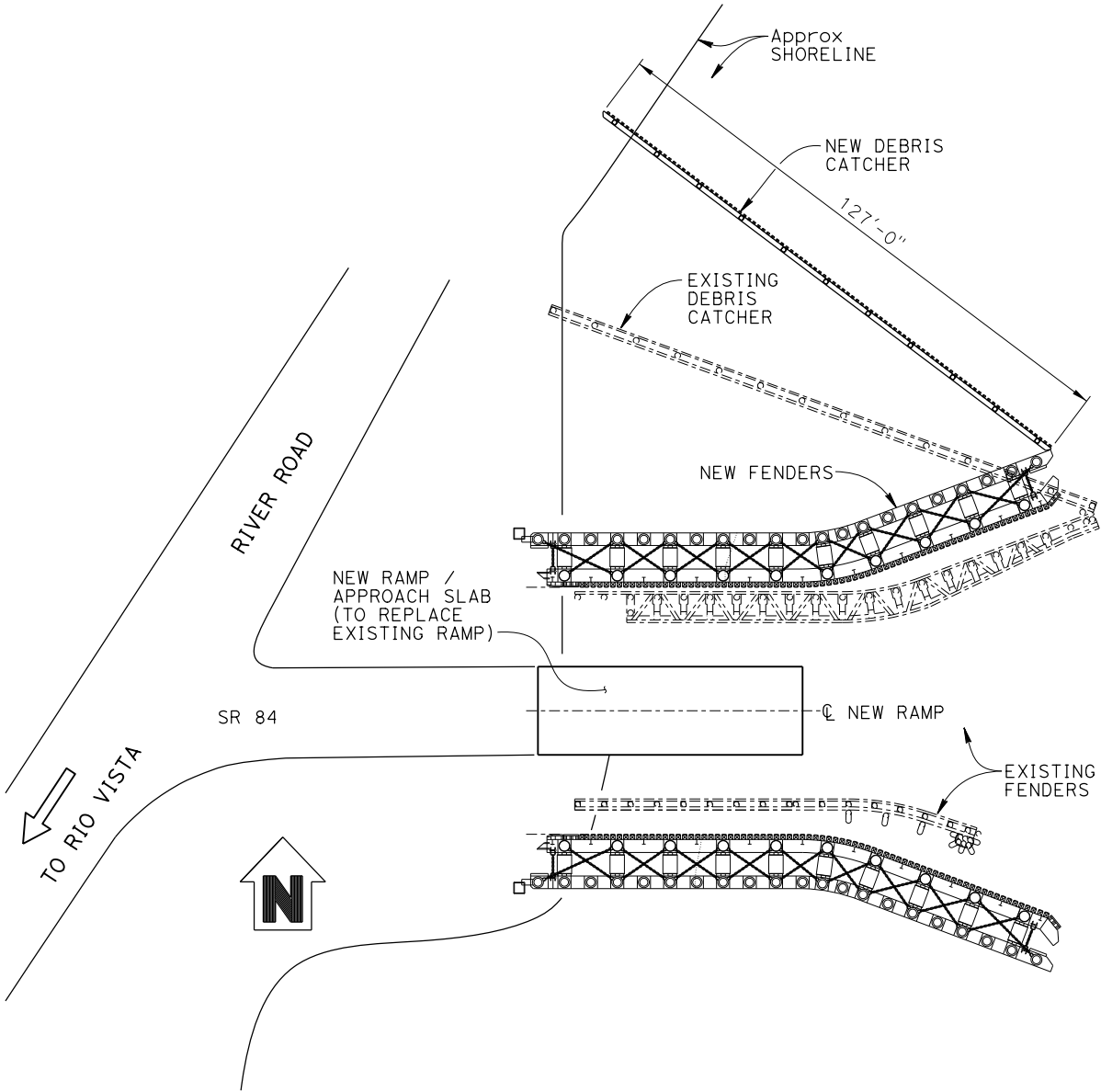
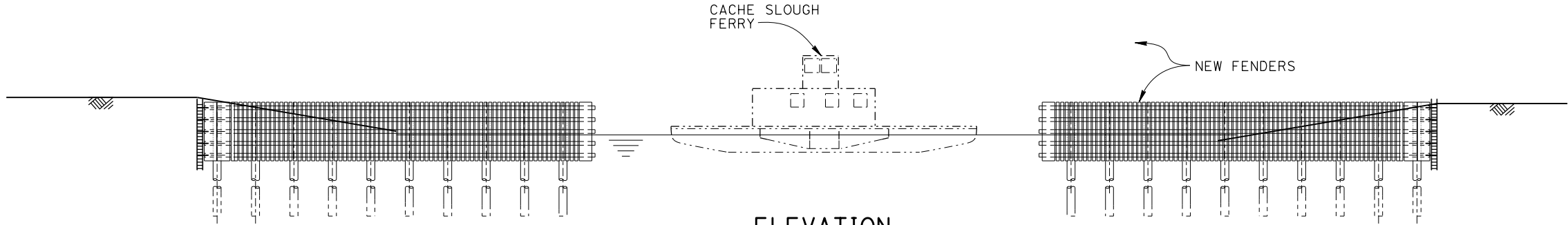
BRIAN J. LUKE
NATURAL RESOURCES SPECIALIST
FLOOD PROTECTION & NAVIGATION SECTION
U.S. ARMY CORPS OF ENGINEERS

PREPARED BY:

DIVISION OF ENGINEERING SERVICES
OFFICE OF GEOTECHNICAL DESIGN – WEST
GEOTECHNICAL SERVICES
BRANCH A

Dist	COUNTY	ROUTE	POST MILE
04	Sol	84	2.5

LEGEND:
----- Existing Structure



- NOTES:
1. Shoreline is approximate and based on available "As-built" plans.
 2. The existing shoreline could be different from the shown on plans, which requires detailed survey.

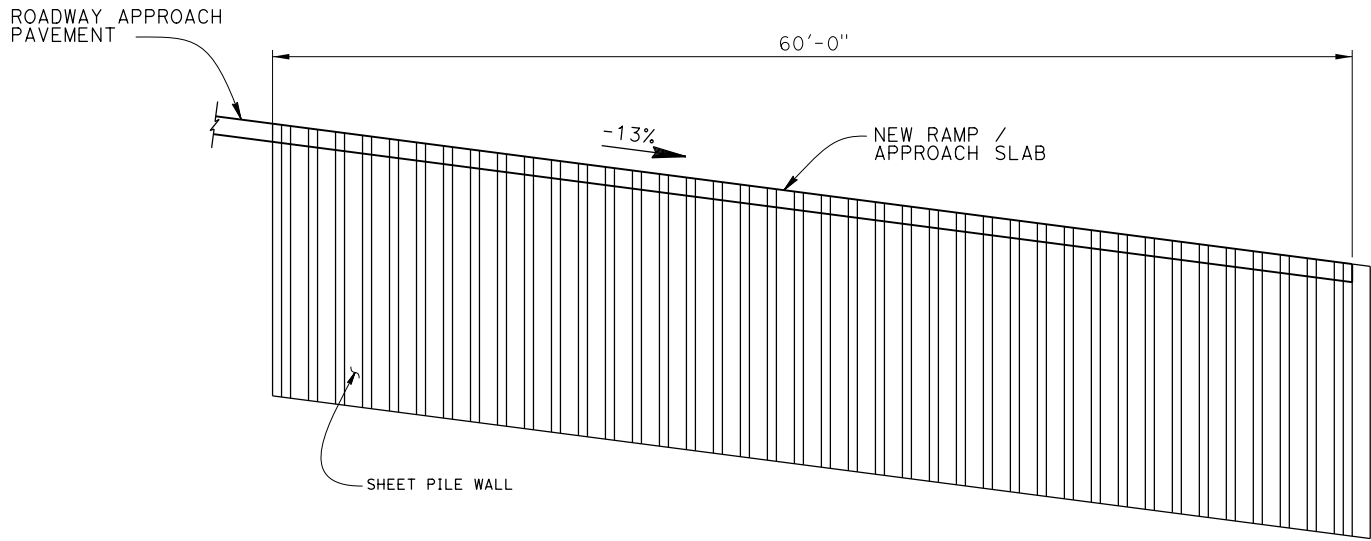
DESIGNED BY M. Friedheim/S. Hegazi	DATE 11/05/21
DRAWN BY C. Cancino	DATE 11/05/21
CHECKED BY X	DATE X
APPROVED X	DATE X

BRIDGE DESIGN
BRANCH 8

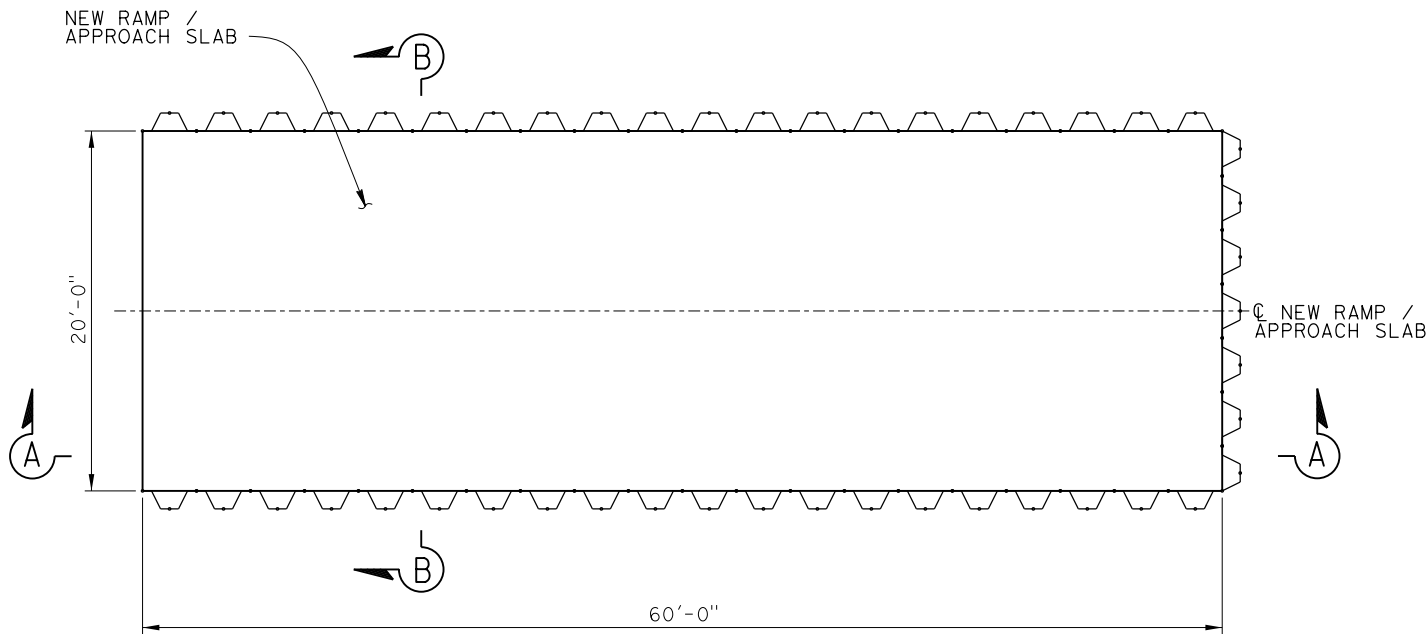
ALTERNATIVE 4	
PLANNING STUDY	
CACHE SLOUGH FERRY	
UNIT: 3593	BRIDGE No.: 23-0034
PROJECT EA: 04-04H060K	PROJECT No. & PHASE: 04130000810

Dist	COUNTY	ROUTE	POST MILE
04	SoI	84	2.5

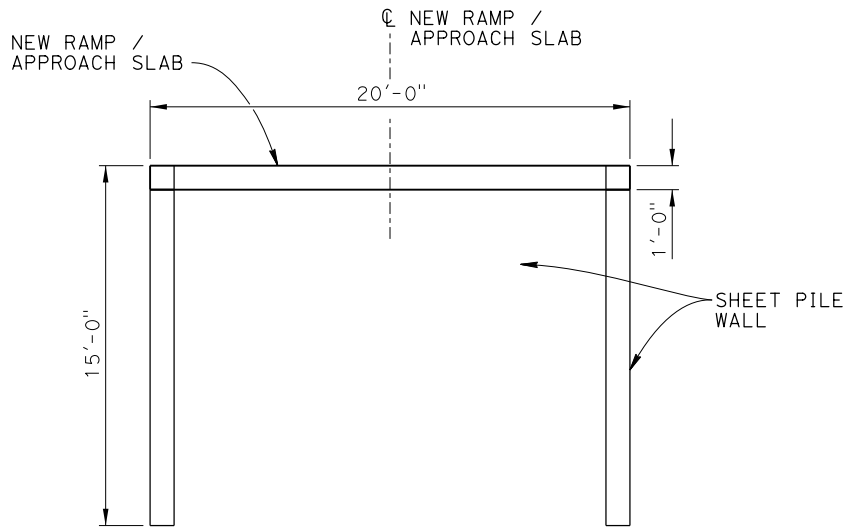
LEGEND:
----- Existing Structure



SECTION A-A
3/16" = 1'-0"



PLAN
3/16" = 1'-0"



SECTION B-B
1/4" = 1'-0"

EXHIBIT 2-2
SHEET 2 OF 4

DESIGNED BY Marc Friedheim	DATE 10/28/21
DRAWN BY C. Cancino / A. Boufnar	DATE 10/28/21
CHECKED BY X	DATE X
APPROVED X	DATE X

BRIDGE DESIGN

BRANCH

8

ALTERNATIVE 4

PLANNING STUDY

CACHE SLOUGH FERRY

UNIT: 3593	BRIDGE No.: 23-0034
PROJECT EA: 04-04H060K	PROJECT No. & PHASE: 04130000810

STRUCTURES DESIGN ADVANCE PLANNING STUDY SHEET
(ENGLISH) (REVISION 3/10/2021)



ALTERNATIVE 4	
PLANNING STUDY	
CACHE SLOUGH FERRY	
UNIT: 3593	BRIDGE No.: 23-0034
PROJECT EA: 04-04H060K	PROJECT No. & PHASE: 04130000810



Dist	COUNTY	ROUTE	POST MILES TOTAL PROJECT	SHEET No.	TOTAL SHEETS
04	SoI	84	2.5		

REGISTERED CIVIL ENGINEER

DATE

PLANS APPROVAL DATE

THE STATE OF CALIFORNIA OR ITS OFFICERS
OR AGENTS SHALL NOT BE RESPONSIBLE FOR
THE ACCURACY OR COMPLETENESS OF SCANNED
COPIES OF THIS PLAN SHEET.

REGISTERED PROFESSIONAL ENGINEER

No.

Exp.

CIVIL

STATE OF CALIFORNIA

ENCLOSURE 5

AGENDA ITEM 8.a

MEMORANDUM

July 7, 2022

TO: Reclamation District No. 2084

FROM: MBK Engineers

SUBJECT: July Engineer's Report

Trustees:

Described below are the items constituting the engineer's report to be discussed at your scheduled July 7, 2022 meeting.

2022-23 Subventions Program – The 2022-23 Subventions Program was approved by the Central Valley Flood Protection Board, CVFPB at their monthly meeting on June 24. There was also a request by DWR to adjust the 2021-22 funding to \$12 million instead of \$10 million due to anticipated cost over-runs from the original budgeted amount; see attached summary sheets for the Program.

2021-22 Subventions Program – Provide MBK your expenses to review for eligibility or provide copies of invoices so we can prepare your claim package for submittal to DWR.

CDFW RMA Coordination – Ongoing, No new information

Erosion Repair Estimate/Alternatives – We have received 2 proposals for repairs and debris removal at the sites identified this Spring, see attached. There are multiple low tide periods mid-July and mid-August. The unit price for material reflects the current rate for small quantities and busy contractors this time of year.

Summer - Fall 2022 Maintenance Activities

- 1) Landside slope grading;
- 2) Erosion Repairs;
- 3) Freeboard Project; timing dependent.

Five Year Plan – The revised draft Five-Year Plan was provided last month for review prior to submittal to DWR. The Five-Year Plan draft will be submitted to DWR Friday, June 3.

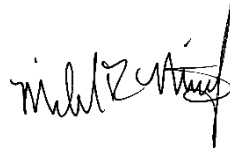
Delta-Wide Emergency Simulation August 25 – We have RD 2084 identified as a participating RD for this upcoming simulation; see attached map of participating agencies. The format will be based on the tabletop scenario from all five counties combined into one snapshot in time, likely Day 3 of the incident. Each participating RD will have scenario's provided the day of via email or text message. There should be a controller assigned to your RD, likely an MBK staffer. Flood operations and emergency management starts at the local level; it all depends on how the District

Delta Barriers –No change, DWR is still pursuing permits (currently on DPP for 408) to investigate proposed site locations in the North Delta; False River Barrier notch is sealed back up this month and will likely stay in place through November 2022.

RD 2084 Access – RD 536 Emergency Slip Location – No significant change; RD 536 is evaluating design alternatives and preparing for potential bid of work later this summer. Continue to coordinate with RD 536 for any questions or updates on the status of this work. RD 536 will provide details on potential timing of work that may affect access to RD 2084 or landowners.

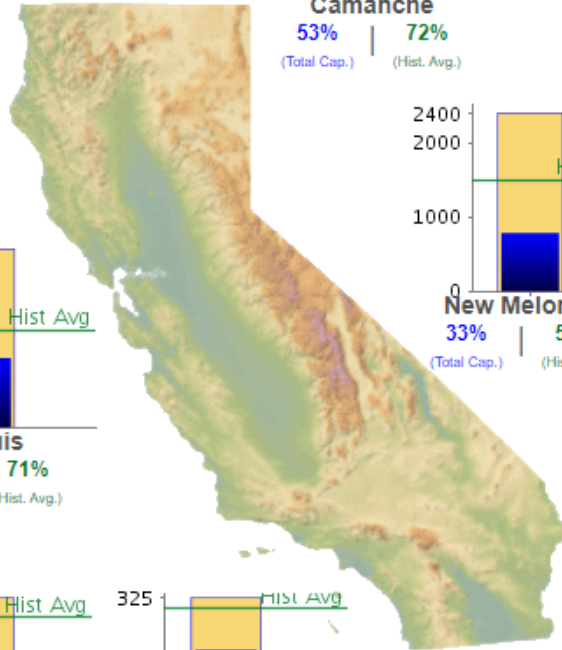
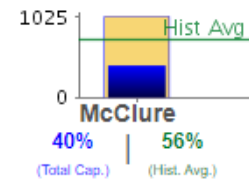
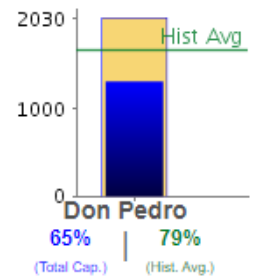
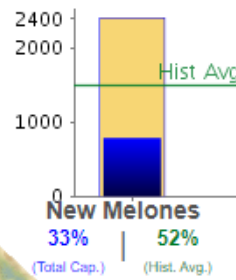
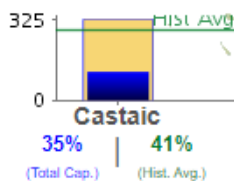
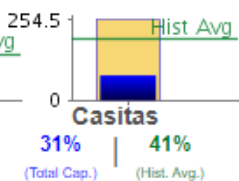
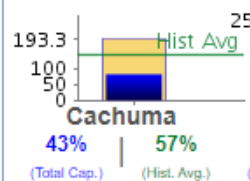
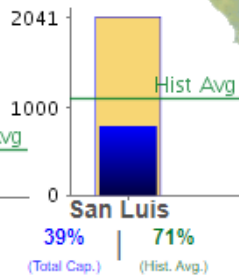
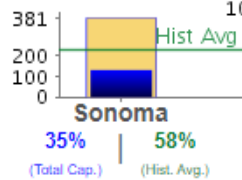
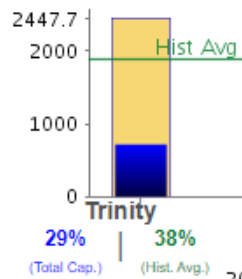
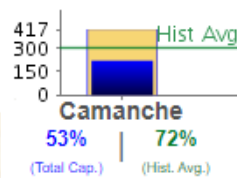
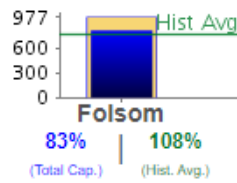
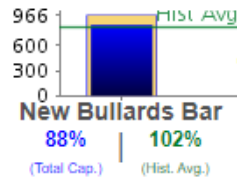
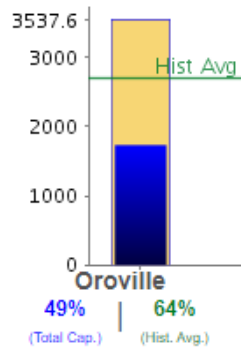
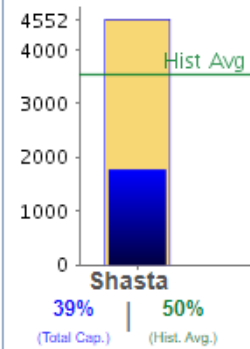
DSC Delta Adapts – The DSC is continuing to work on their outreach strategy and meeting with historic landowners to better understand the connection to the land. 3 of the 4 groups met in June, Flood, Ag. and Ecosystem. The Flood focus group is moving towards a 192-82 standard but the application and approach to what standard applies to certain regions needs adjustment, DSC is categorizing levels of protection into priorities. The focus group has provided comments, there will be limited coordination until the next meetings later this year. See attached slides from the recent working group

Thanks

A handwritten signature in black ink, appearing to read "M. Z. Smith" or similar, with a stylized flourish at the end.

CURRENT CONDITIONS MAJOR WATER SUPPLY RESERVOIRS: 29-JUN-2022

Data as of Midnight: 29-Jun-2022



Change Date: 29-Jun-2022

LEGEND

Blue Bar: Storage level for date
Gold Bar: Total reservoir capacity
Green Line: Historic level for date.

Capacity (TAF) | Historical Avg Mark

% of Capacity | % Hist. Avg.
(Click res. 3 char. code for details)

810 | Hist Avg

520.5 | Hist Avg

1000 | Hist Avg

ENDING AT MIDNIGHT - 06/29/2022

FOR SELECTED RESERVOIRS IN NORTHERN AND SOUTHERN CALIFORNIA

Report generated: June 30, 2022 05:05

WATER STORAGE											
Reservoir Name	StaID	Capacity (AF)	Elevation (FT)	Storage (AF)	Storage Change	% of Capacity	Average Storage	% of Average	Outflow (CFS)	Inflow (CFS)	Storage-Year Ago This Date
TRINITY RIVER											
TRINITY LAKE	CLE	2,447,650	2,219.56	716,744	-426	29	1,884,008	38	419	271	1,165,719
WHISKEYTOWN	WHI	241,100	1,208.27	235,575	-477	98	237,952	99	226	26	237,863
LEWISTON	LEW	14,660	1,901.28	14,120	-38	96	13,992	101	474	462	13,528
RUSSIAN RIVER											
SONOMA(WARM SPRINGS)	WRS	381,000	398.93	131,784	-227	35	228,329	58	89	-10	130,346
MENDOCINO (COYOTE)	COY	122,400	726.31	50,612	30	41	78,655	64	70	100	30,916
SACRAMENTO RIVER											
SHASTA	SHA	4,552,000	943.73	1,775,688	-3,006	39	3,548,990	50	4,282	2,976	1,752,185
KESWICK	KES	23,772	585.92	23,085	634	97	21,907	105	4,463	4,791	22,607
FEATHER RIVER											
OROVILLE	ORO	3,537,577	755.83	1,732,558	-9,179	49	2,692,187	64	---	---	1,136,062
ANTELOPE	ANT	22,566	5,001.09	21,728	-36	96	21,589	101	---	---	15,743
FRENCHMAN	FRD	55,477	5,573.69	35,621	-72	64	38,451	93	---	---	32,395
LAKE DAVIS	DAV	83,000	5,764.37	47,427	-117	57	61,043	78	---	---	47,895
YUBA RIVER											
BULLARDS BAR	BUL	966,000	1,930.98	850,828	-708	88	832,220	102	742	312	520,529
ENGLEBRIGHT	ENG	70,000	524.24	67,740	-1,160	97	65,981	103	---	---	66,704
AMERICAN RIVER											
FOLSOM	FOL	977,000	450.96	815,394	-7,747	83	757,588	108	5,447	1,671	292,032
UNION VALLEY	UNV	266,369	4,867.21	258,319	-400	97	242,926	106	---	---	161,861
LOON LAKE	LON	69,306	6,408.75	67,559	0	97	66,758	101	---	---	59,149
ICE HOUSE	ICH	43,496	5,443.81	39,418	-58	91	40,873	96	---	22	31,462
NIMBUS	NAT	9,000	123.66	8,101	56	90	8,052	101	5,132	5,165	8,021

TABLE 1
2022-23 DELTA LEVEE MAINTENANCE SUBVENTIONS PROGRAM
APPLICATION AMOUNTS BY PRIORITY

				Priority 1 Maintenance	Priority 2				
					Priority 2.1			Priority 2.2	Priority 2.3
RD NO	District Name	Levee Length Miles	Application Amount \$	Max of \$20,000 per levee mile \$	Category 2 Fish and Wild \$	Category 3 HMP \$	Category 4 Eligible Bul 192-82 \$	Over \$100,000 per levee mile \$	Over Bull. 192-82 \$
1	Union Island, East	14	473,000	266,000	55,000	0	138,000	0	0
2	Union Island, West	16.2	545,000	307,800	35,000	0	186,000	0	0
3	Grand Island	28.8	1,045,000	547,200	10,000	0	459,000	0	0
38	Staten Island	25.4	750,000	482,600	5,000	0	237,000	0	0
150	Merritt Island	18.1	410,000	343,900	10,000	10,000	28,000	0	0
307	Lisbon	6.6	213,500	125,400	25,000	0	56,500	0	0
341	Sherman Island	19.5	600,000	370,500	10,000	0	200,000	0	0
348	New Hope Tract	17.4	350,000	322,600	10,000	0	0	0	0
349	Sutter Island	12.5	167,000	144,500	5,000	5,000	0	0	0
403	Rough & Ready Island	6.8	302,000	129,200	47,500	35,000	83,500	0	0
404*	Boggs Tract	0.7	62,000	12,250	8,500	0	39,500	0	0
501	Ryer Island	20.6	378,500	220,400	12,500	125,000	0	0	0
524	Roberts Island, Middle	9.7	372,500	184,300	20,000	0	158,500	0	0
536	Egbert Tract	10.6	425,000	201,400	15,000	50,000	148,000	0	0
544	Roberts Island, Upper	15	885,000	285,000	70,000	0	515,000	0	0
548	Terminus Tract	16.1	644,875	198,400	71,500	0	358,875	0	0
551	Pearson District	15.9	450,000	302,100	1,000	25,000	106,000	0	0
554*	Walnut Grove	3.4	87,500	59,500	0	0	19,500	0	0
556	Upper Andrus Island	11.2	160,000	138,800	10,000	0	0	0	0
563	Tyler Island	22.9	3,546,500	435,100	60,000	0	2,230,000	798,500	0
684	Roberts Island, Lower	16.1	802,230	251,310	133,100	0	401,720	0	0
756	Bouldin Island	18	631,000	342,000	101,000	25,000	145,000	0	0
773	Fabian Tract	18.8	1,155,500	357,200	10,000	0	769,500	0	0
799*	Hotchkiss Tract	8.9	800,000	155,750	70,000	60,000	492,000	0	0
800*	Byron Tract	9.7	2,379,000	169,750	23,000	0	947,000	1,215,000	0
828*	Weber Tract	1.7	97,000	29,750	13,500	0	49,500	0	0
830	Jersey Island	15.5	1,162,000	294,500	2,000	365,000	485,000	0	0
999	Netherlands	32.4	714,000	591,600	20,000	70,000	0	0	0
1002	Glannvale Tract	13	132,000	99,000	20,000	0	0	0	0
1007	Pico Naglee	8.5	461,074	58,409	19,525	0	374,640	0	0
1601	Twitchell Island	11.9	2,601,000	226,100	37,500	0	1,152,500	1,173,000	0
1607	Van Sickle Island	3.7	411,000	70,300	10,000	25,000	302,000	0	0
1608*	Lincoln Village West	3.6	435,500	63,000	12,500	0	347,500	3,500	0
1614*	Smith Tract	2.8	520,000	49,000	57,500	0	222,500	184,000	0
1667	Prospect Island	6.8	220,000	113,200	0	0	100,000	0	0
2023	Venice Island	12.3	1,445,000	233,700	50,000	150,000	999,000	0	0
2024	Orwood/Palm Tract	13.9	1,694,000	264,100	141,570	0	1,248,430	26,000	0
2025	Holland Tract	11	465,000	209,000	6,000	35,000	204,000	0	0
2026	Webb tract	12.9	665,000	245,100	101,000	25,000	281,000	0	0
2027	Mandeville Island	14.3	3,150,000	271,700	60,000	0	1,370,000	1,434,000	0
2028	Bacon Island	14.4	541,000	273,600	6,000	25,000	222,000	0	0

				Priority 1 Maintenance	Priority 2					
					Priority 2.1			Priority 2.2	Priority 2.3	
RD NO	District Name		Levee Length Miles	Application Amount \$	Max of \$20,000 per levee mile \$	Category 2 Fish and Wild \$	Category 3 HMP \$	Category 4 Eligible Bul 192-82 \$	Over \$100,000 per levee mile \$	Over Bull. 192-82 \$
2029	Empire Tract		10.5	278,000	199,500	1,000	10,000	57,000	0	0
2030	McDonald Island		13.7	3,455,000	260,300	150,000	0	1,220,000	1,811,000	0
2033	Brack Tract		10.8	372,000	205,200	10,000	50,000	96,000	0	0
2037	Rindge Tract		15.8	357,000	289,200	2,000	50,000	0	0	0
2039	Jones Tracts		18.3	1,523,388	347,700	177,870	0	979,518	0	0
2040	Victoria Island		15.1	1,535,000	286,900	20,000	150,000	1,063,000	0	0
2041	Medford Island		5.9	391,000	112,100	25,000	25,000	223,000	0	0
2042*	Bishop Tract		7.8	1,420,000	136,500	10,000	0	770,000	484,000	0
2044	King Island		9.1	361,000	172,900	10,000	25,000	144,000	0	0
2058	Pescadero District		2.5	130,000	47,500	5,000	20,000	55,000	0	0
2059	Bradford Island		7.4	1,948,000	140,600	115,000	0	625,000	1,060,000	0
2060	Hasting Tract		16	405,000	304,000	10,000	50,000	25,000	0	0
2065	Veale Tract		5.1	165,000	96,900	4,000	20,000	39,000	0	0
2068	Yolano		8.7	320,000	165,300	5,000	20,000	121,000	0	0
2072	Woodward Island		8.8	872,410	167,200	91,960	0	604,450	0	0
2074*	Sargent-Barnhart		3.5	8,968,050	61,250	0	0	350,000	8,548,050	0
2084	Little Egbert Tract		5.4	362,000	102,600	10,000	75,000	169,000	0	0
2089	Stark Tract		3.5	245,000	66,500	30,000	0	145,000	0	0
2090	Quimby Island		7	247,500	133,000	0	0	107,500	0	0
2098	Cachee-Haas Slough		11	371,000	209,000	5,000	10,000	136,000	0	0
2110	McCormack-Wm. Tract		8.8	470,000	167,200	55,000	135,000	104,000	0	0
2111	Deadhorse Island		2.6	295,000	49,400	27,500	45,000	170,500	0	0
2113	Fay Island		1.6	484,500	30,400	45,000	115,000	0	292,500	0
2115	Shima tract		6.6	236,000	125,400	16,500	50,000	37,500	0	0
2117	Coney Island		5.4	396,000	102,600	32,500	0	255,500	0	0
2119	Wright-Elmwood Tract		7.1	348,500	134,900	25,000	0	181,500	0	0
2126	Atlas Tract		2.3	155,500	43,700	7,500	50,000	52,000	0	0
2137	Dutch Slough		5.2	300,000	98,800	5,000	30,000	161,000	0	0
BALMD	Brannan-Andrus LMD		29.4	1,151,250	558,600	140,000	0	423,250	0	0
BIMID*	Bethel Island MID		11.5	665,000	201,250	120,000	0	315,000	0	0
CLD	Collinsville Levee District		1.5	146,750	28,500	6,000	0	110,750	0	0
	Total:	72	809.5	60,723,527	14,489,919	2,537,025	1,960,000	23,817,133	17,029,550	0

* Indicates an urban district, thus a \$2,500 per levee mile deductible.

TABLE 2
2022-23 DELTA LEVEE MAINTENANCE SUBVENTIONS PROGRAM
FUNDING ALLOCATION PLAN

RD NO	District Name	Application Amount	Levee Length	Levee Mile Deductible	Eligible Costs	Maximum Reimbursment 75% of (4)	Estimated Available Reimbursement	Advance 75% of (6)
		\$ (1)	Miles (2)	\$ (3)	\$ (4)	\$ (5)	\$ (6)	\$ (7)
1	Union Island, East	473,000	14	(\$14,000)	459,000	344,250	183,576	137,682
2	Union Island, West	545,000	16.2	(\$16,200)	528,800	396,600	212,424	159,318
3	Grand Island	1,045,000	28.8	(\$28,800)	1,016,200	762,150	377,642	283,231
38	Staten Island	750,000	25.4	(\$25,400)	724,600	543,450	333,059	249,794
150	Merritt Island	410,000	18.1	(\$18,100)	391,900	293,925	237,337	178,003
307	Lisbon	213,500	6.6	(\$6,600)	206,900	155,175	86,543	64,907
341	Sherman Island	600,000	19.5	(\$19,500)	580,500	435,375	255,695	191,771
348	New Hope Tract	350,000	17.4	(\$17,400)	332,600	249,450	222,638	166,978
349	Sutter Island	167,000	12.5	(\$12,500)	154,500	115,875	99,725	74,793
403	Rough & Ready Island	302,000	6.8	(\$6,800)	295,200	221,400	89,165	66,874
404*	Boggs Tract	62,000	0.7	(\$1,750)	60,250	45,188	8,454	6,341
501	Ryer Island	378,500	20.6	(\$20,600)	357,900	268,425	152,106	114,079
524	Roberts Island, Middle	372,500	9.7	(\$9,700)	362,800	272,100	127,192	95,394
536	Egbert Tract	425,000	10.6	(\$10,600)	414,400	310,800	138,993	104,245
544	Roberts Island, Upper	885,000	15	(\$15,000)	870,000	652,500	196,688	147,516
548	Terminus Tract	644,875	16.1	(\$16,100)	628,775	471,581	136,923	102,692
551	Pearson District	450,000	15.9	(\$15,900)	434,100	325,575	208,490	156,367
554*	Walnut Grove	87,500	3.4	(\$8,500)	79,000	59,250	41,063	30,797
556	Upper Andrus Island	160,000	11.2	(\$11,200)	148,800	111,600	95,791	71,843
563	Tyler Island	3,546,500	22.9	(\$22,900)	3,523,600	2,642,700	300,278	225,208
684	Roberts Island, Lower	802,230	16.1	(\$16,100)	786,130	589,598	173,438	130,078
756	Bouldin Island	631,000	18	(\$18,000)	613,000	459,750	236,026	177,020
773	Fabian Tract	1,155,500	18.8	(\$18,800)	1,136,700	852,525	246,516	184,887
799*	Hotchkiss Tract	800,000	8.9	(\$22,250)	777,750	583,312	107,489	80,616
800*	Byron Tract	2,379,000	9.7	(\$24,250)	2,354,750	1,766,062	117,150	87,863
828*	Weber Tract	97,000	1.7	(\$4,250)	92,750	69,562	20,532	15,399
830	Jersey Island	1,162,000	15.5	(\$15,500)	1,146,500	859,875	203,245	152,434
999	Netherlands	714,000	32.4	(\$32,400)	681,600	511,200	408,284	306,213
1002	Glannvale Tract	132,000	13	(\$13,000)	119,000	89,250	68,323	51,243
1007	Pico Naglee	461,074	8.5	(\$8,500)	452,574	339,430	40,310	30,233
1601	Twitchell Island	2,601,000	11.9	(\$11,900)	2,589,100	1,941,825	156,040	117,030
1607	Van Sickel Island	411,000	3.7	(\$3,700)	407,300	305,475	48,516	36,387
1608*	Lincoln Village West	435,500	3.6	(\$9,000)	426,500	319,875	43,479	32,609
1614*	Smith Tract	520,000	2.8	(\$7,000)	513,000	384,750	33,817	25,362
1667	Prospect Island	220,000	6.8	(\$6,800)	213,200	159,900	78,123	58,592
2023	Venice Island	1,445,000	12.3	(\$12,300)	1,432,700	1,074,525	161,285	120,963
2024	Orwood/Palm Tract	1,694,000	13.9	(\$13,900)	1,680,100	1,260,075	182,265	136,698
2025	Holland Tract	465,000	11	(\$11,000)	454,000	340,500	144,238	108,179
2026	Webb tract	665,000	12.9	(\$12,900)	652,100	489,075	169,152	126,864
2027	Mandeville Island	3,150,000	14.3	(\$14,300)	3,135,700	2,351,775	187,510	140,632
2028	Bacon Island	541,000	14.4	(\$14,400)	526,600	394,950	188,821	141,616

RD NO	District Name	Application Amount \$ (1)	Levee Length Miles (2)	Levee Mile Deductible \$ (3)	Eligible Costs \$ (4)	Maximum Reimbursment 75% of (4) \$ (5)	Estimated Available Reimbursement \$ (6)	Advance 75% of (6) \$ (7)
2029	Empire Tract	278,000	10.5	(\$10,500)	267,500	200,625	137,682	103,261
2030	McDonald Island	3,455,000	13.7	(\$13,700)	3,441,300	2,580,975	179,642	134,732
2033	Brack Tract	372,000	10.8	(\$10,800)	361,200	270,900	141,616	106,212
2037	Rindge Tract	357,000	15.8	(\$15,800)	341,200	255,900	199,587	149,690
2039	Jones Tracts	1,523,388	18.3	(\$18,300)	1,505,088	1,128,816	239,960	179,970
2040	Victoria Island	1,535,000	15.1	(\$15,100)	1,519,900	1,139,925	198,000	148,500
2041	Medford Island	391,000	5.9	(\$5,900)	385,100	288,825	77,364	58,023
2042*	Bishop Tract	1,420,000	7.8	(\$19,500)	1,400,500	1,050,375	94,203	70,653
2044	King Island	361,000	9.1	(\$9,100)	351,900	263,925	119,324	89,493
2058	Pescadero District	130,000	2.5	(\$2,500)	127,500	95,625	32,781	24,586
2059	Bradford Island	1,948,000	7.4	(\$7,400)	1,940,600	1,455,450	97,033	72,775
2060	Hasting Tract	405,000	16	(\$16,000)	389,000	291,750	209,801	157,351
2065	Veale Tract	165,000	5.1	(\$5,100)	159,900	119,925	66,874	50,156
2068	Yolano	320,000	8.7	(\$8,700)	311,300	233,475	114,079	85,559
2072	Woodward Island	872,410	8.8	(\$8,800)	863,610	647,708	115,391	86,543
2074*	Sargent-Barnhart	8,968,050	3.5	(\$8,750)	8,959,300	6,719,475	42,271	31,703
2084	Little Egbert Tract	362,000	5.4	(\$5,400)	356,600	267,450	70,808	53,106
2089	Stark Tract	245,000	3.5	(\$3,500)	241,500	181,125	45,894	34,420
2090	Quimby Island	247,500	7	(\$7,000)	240,500	180,375	91,788	68,841
2098	Cachee-Haas Slough	371,000	11	(\$11,000)	360,000	270,000	144,238	108,179
2110	McCormack-Wm. Tract	470,000	8.8	(\$8,800)	461,200	345,900	115,391	86,543
2111	Deadhorse Island	295,000	2.6	(\$2,600)	292,400	219,300	34,093	25,569
2113	Fay Island	484,500	1.6	(\$1,600)	482,900	362,175	20,980	15,735
2115	Shima tract	236,000	6.6	(\$6,600)	229,400	172,050	86,543	64,907
2117	Coney Island	396,000	5.4	(\$5,400)	390,600	292,950	70,808	53,106
2119	Wright-Elmwood Tract	348,500	7.1	(\$7,100)	341,400	256,050	93,099	69,824
2126	Atlas Tract	155,500	2.3	(\$2,300)	153,200	114,900	30,159	22,619
2137	Dutch Slough	300,000	5.2	(\$5,200)	294,800	221,100	68,185	51,139
BALMD	Brannan-Andrus LMD	1,151,250	29.4	(\$29,400)	1,121,850	841,388	385,509	289,132
BIMID*	Bethel Island MID	665,000	11.5	(\$28,750)	636,250	477,188	138,890	104,167
CLD	Collinsville Levee District	146,750	1.5	(\$1,500)	145,250	108,938	19,669	14,752
Total:		72 60,723,527	809.5	(\$889,900)	59,833,627	44,875,221	10,000,000	7,500,000

* Indicates an urban district, thus a \$2,500 per levee mile deductible.

Bid Date: 6/23/2022
Time: 12:00PM

Quote Number: 22009

Reclamation District No. 2084

Proposal for:
Erosion Repair and Inspection
from
WARREN E. GOMES EXCAVATING, INC.
P.O. BOX 369, RIO VISTA, CA 94571
(707) 374-2881 Fax: (707) 374-4312
License: 279646 Type: A/HAZ



Item	Description	Quantity	Unit	Unit Price	Total Price
01	Mobilization/Demobilization	1.00	JOB	1,000.00	1,000.00
02	Supply & Deliver Rip Rap	210.00	TON	55.15	11,581.50
03	Place Rip Rap & Remove Debris	2.00	DAY	3,760.00	7,520.00
				Total:	20,101.50

Proposal includes supplying and placing 18" minus rip rap at 5 locations.
Exploring sinkhole.
Removing driftwood debris to the landside slope.

Attachment Enclosed

Estimator: Warren Gomes

Job Conditions - Attachment 'A'

Erosion Repair and Inspection

Exclusions

- Engineering and staking.
- Inspection, permits, fees, bonds or testing.
- Utility relocation or removal.
- Removal or handling of hazardous, contaminated or buried materials.
- Winter maintenance, erosion control and other work required by a SWPP plan.
- Landscape and irrigation work.
- Fences and walls.
- Structural excavation and backfill.
- Rock or sand cushion under any concrete.
- Concrete work.
- Striping, signs, bumpers, headers or bollards.
- Prime oil, fog seal and soil sterilant.
- Stripping and discing.
- Overexcavation of unstable soils.
- Dewatering.
- As-built drawings.
- Water meters.

Qualifications

- Balancing the site (i.e. no import or export). Grade adjustments may be required to achieve this balance.
- Using the adjacent property as a borrow/disposal site
- Placing all strippings in the rear of the lots or in landscape areas.
- Providing dust control only when WEG crews are physically working on the project.
- Prices may need to be revised to reflect any changes shown on the final approved plans.
- This a unit price proposal. Total amount due shall be based upon the unit price and actual quantities performed.
- Working five eight hour shifts per week.
- One move-in for each major phase of work.
- Additional work at cost plus 15% or at a mutually agreed upon price.
- Proposal is contingent upon execution of a mutually agreeable contract which would include the above conditions.
- Proposal valid for 30 days.



1090 St. Francis Way
P.O. Box 758
Rio Vista, CA 94571-0758
(707) 374-6472 Telephone
(707) 374-6888 Fax
California State License No. 247178

To:	MBK Engineers	Contact:	Michael Nishimura
Address:	455 University Avenue, Suite 100 Sacramento, CA 95825 UNITED STATES	Phone:	(916) 456-4400
		Fax:	(916) 456-0253
Project Name:	RD 2084 - Little Egbert Tract (Erosion Project '22)	Bid Number:	
Project Location:	Little Egbert Tract, Rio Vista, CA, 95471	Bid Date:	6/21/2022

Item #	Item Description	Estimated Quantity	Unit	Unit Price	Total Price
01	Mobilization - In/Out	1.00	LS	\$1,487.00	\$1,487.00
02	Sinkhole Repairs (Sta. 219+85)	1.00	LS	\$4,750.00	\$4,750.00
03	Demo/Offhaul - Ex. Tree (Sta. 124+00)	1.00	LS	\$5,090.00	\$5,090.00
04	Furnish & Place - 18" Minus Rap Rap (5 Sites)	204.00	TON	\$71.50	\$14,586.00

Total Bid Price: \$25,913.00

Notes:

- If existing tree can be cut up and stockpiled onsite deduct \$500.
- No bonds, permits, fees, testing or engineering included.
- Original lines and grades by others.
- Clear access to be provided by others.
- Not responsible for damage to any utilities not clearly marked by owner.
- Dust control provided only when Asta Construction is actively engaged in dust causing operations.
- Finished landscape grading, hydroseeding, topsoil, irrigation and planting by others.
- Any item of work not specifically outlined in the above scope of work to be excluded.
- Price is valid for 30 days, any price increases from material suppliers or vendors beyond the control of Asta Construction will be additionally billed at the direct cost of increase. Fuel surcharge will be applied to all trucking rates, if required, at the rate of 1% increase for every \$0.10 per gallon increase. Fuel priced at \$6.90 per gallon at bid date.

Payment Terms:

The above-quoted price constitutes the cash price. If this account has not been paid in full within 30 days from the invoice date add 1.5% interest per month until paid in full. If legal action is required to effect payment on this account customer agrees to pay all court costs and reasonable attorney fees.

<p>ACCEPTED:</p> <p>The above prices, specifications and conditions are satisfactory and are hereby accepted.</p> <p>Buyer: _____</p> <p>Signature: _____</p> <p>Date of Acceptance: _____</p>	<p>CONFIRMED:</p> <p>Asta Construction Co., Inc.</p> <p>Authorized Signature: _____</p> <p>Estimator: Scott Schmitt 707-249-8889 scott@astaconstruction.com</p>
--	--

YOLO

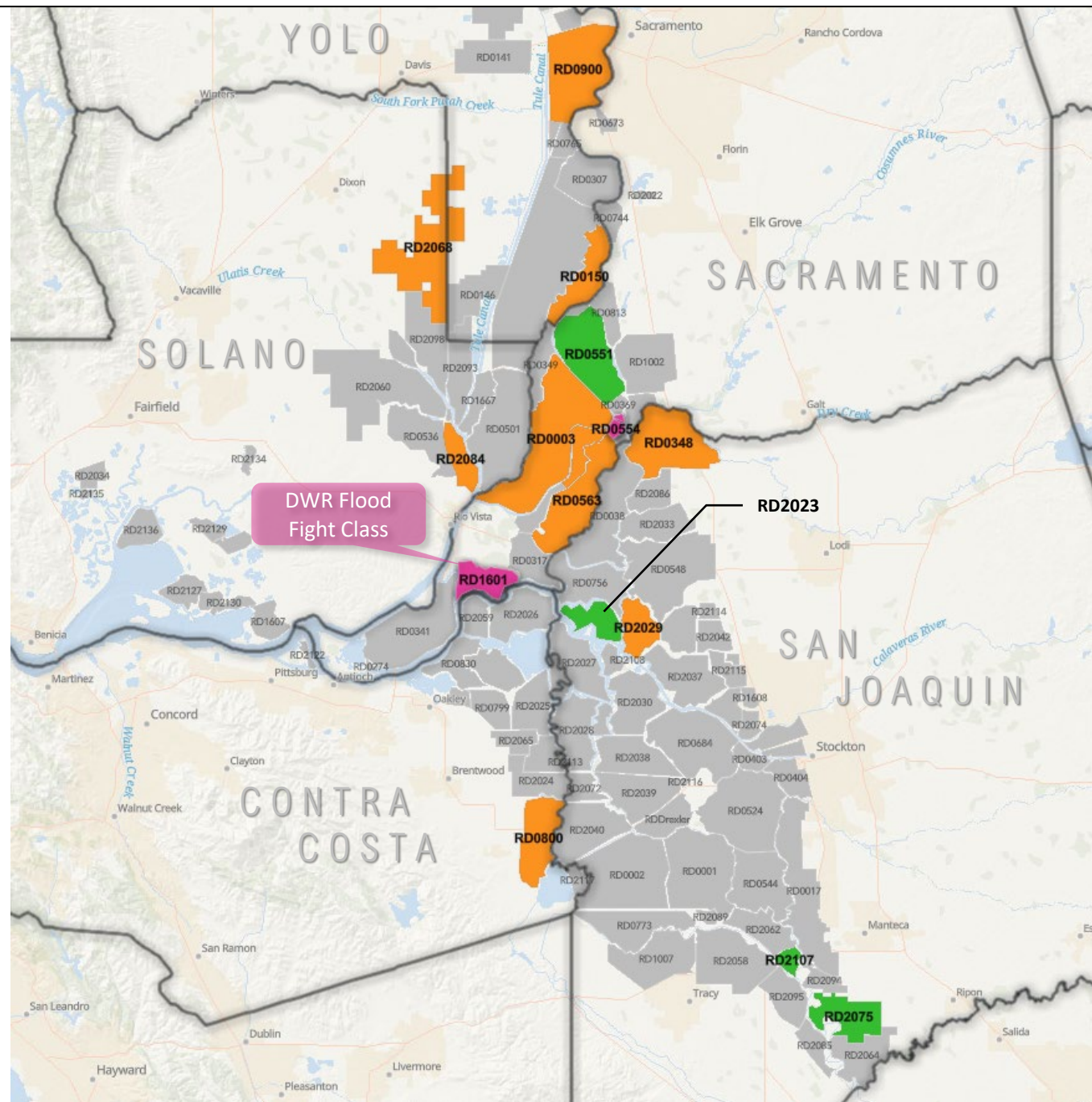
SOLANO

SACRAMENTO

SAN JOAQUIN

CONTRA COSTA

Legend



June 2, 2022

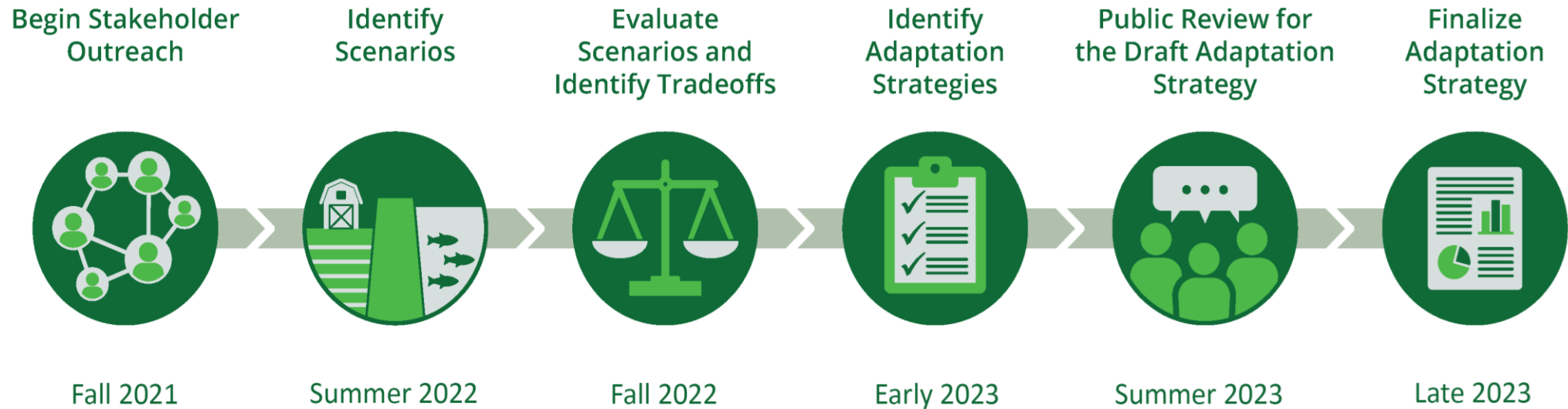
Delta Adapts: Flood Focus Group Meeting 3



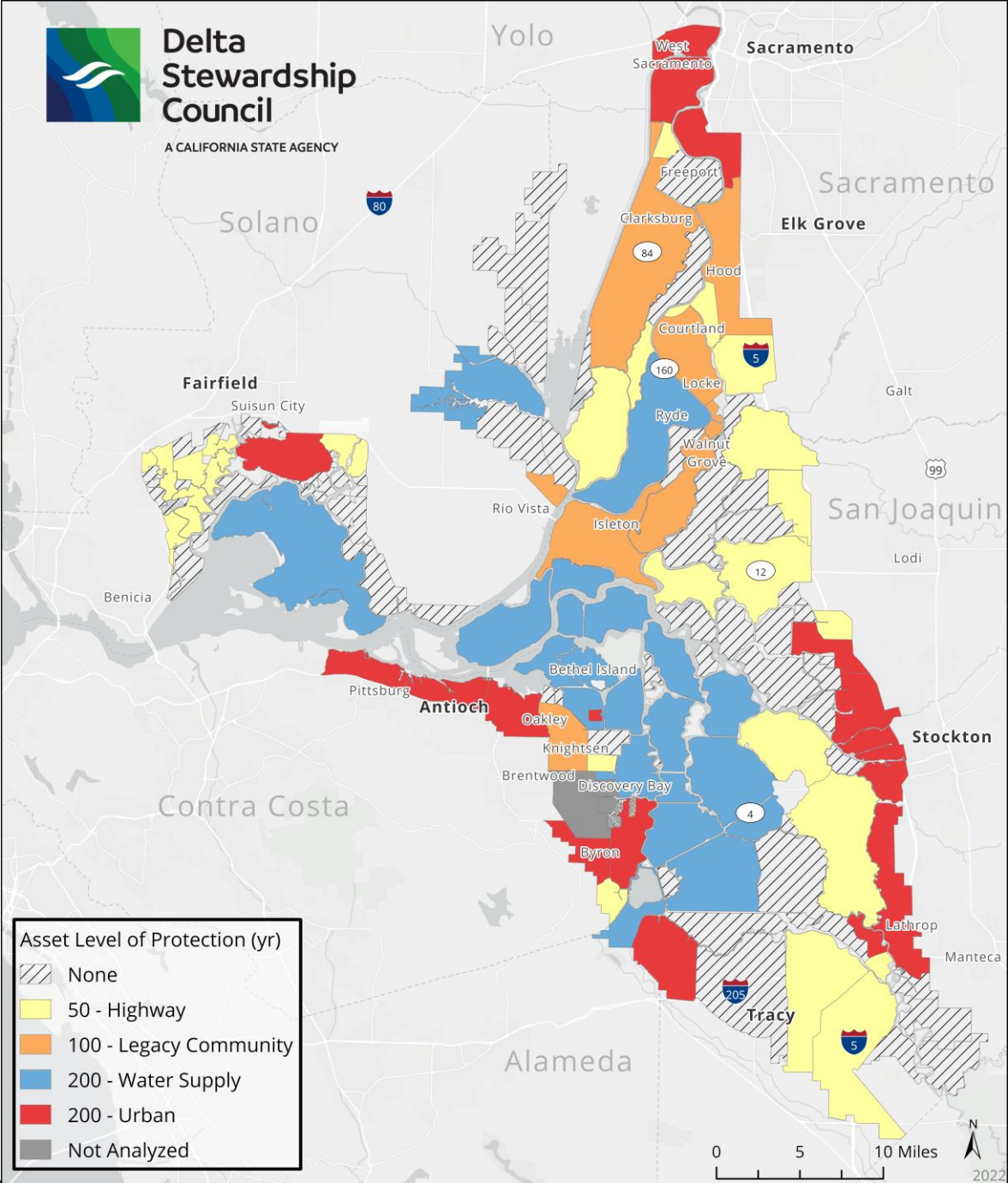
**Delta
Stewardship
Council**

A CALIFORNIA STATE AGENCY

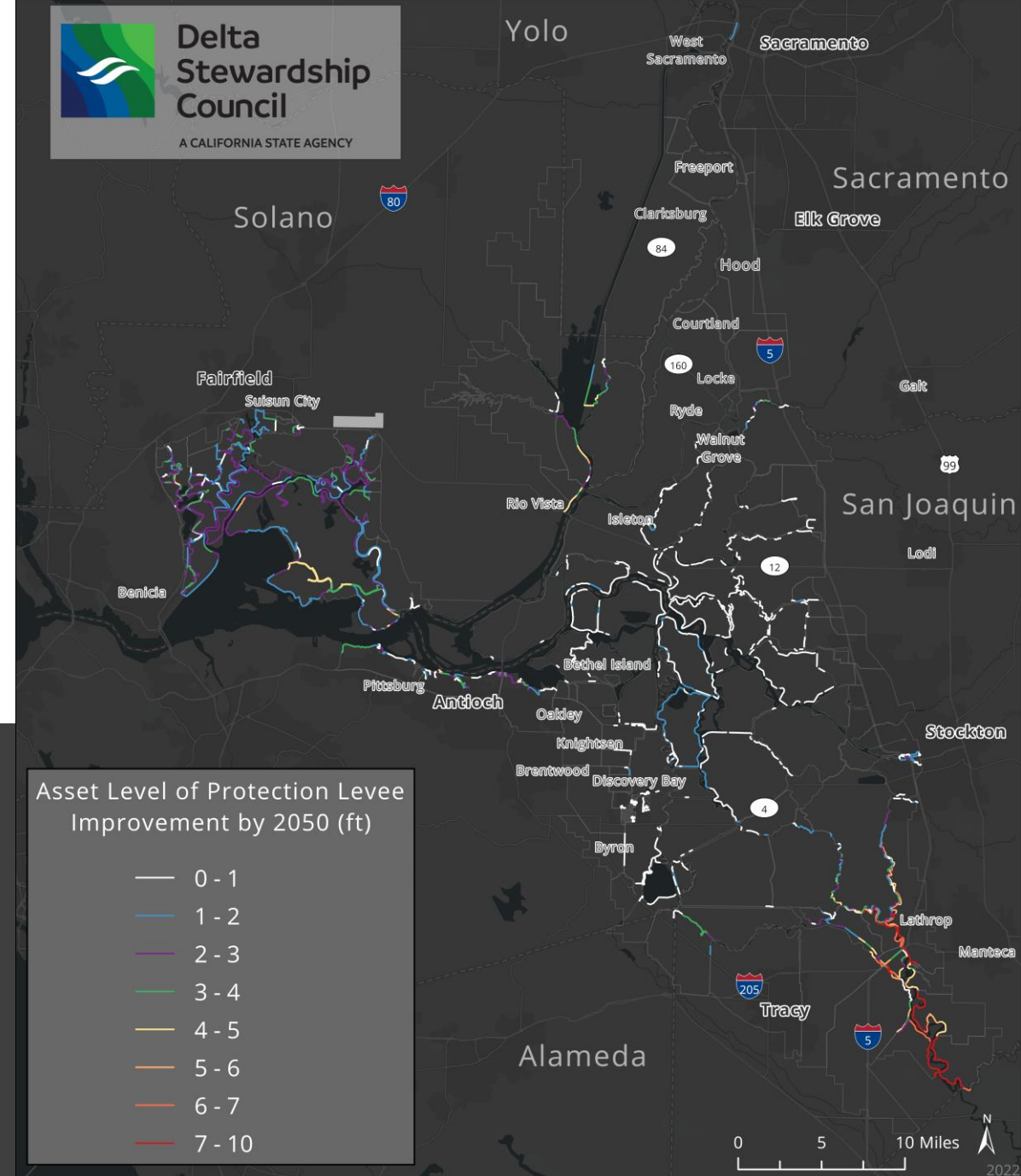
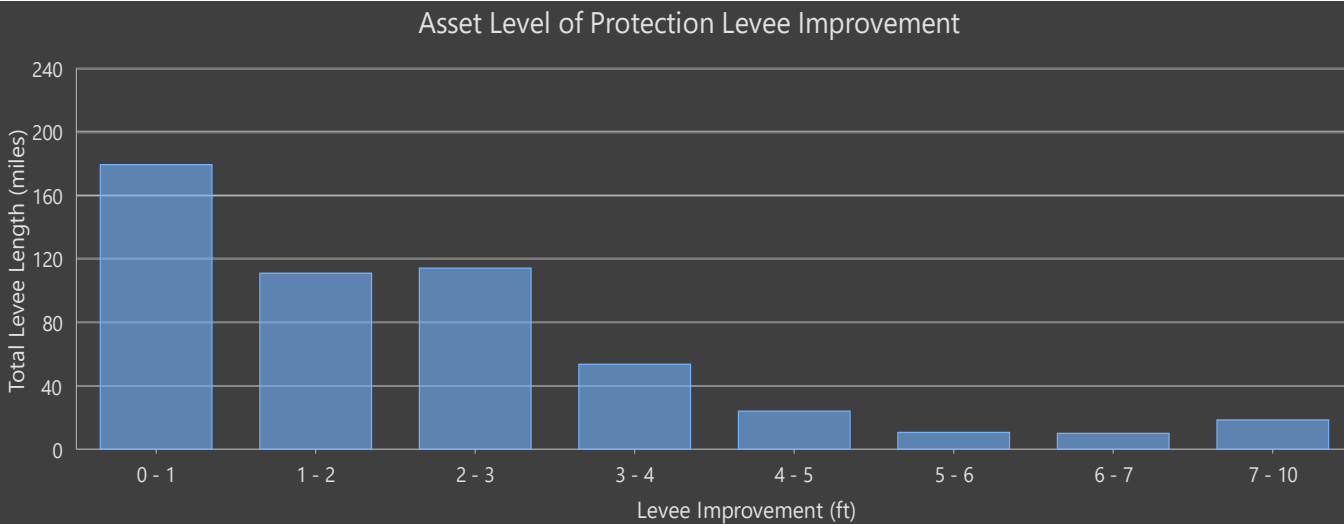
Adaptation Approach



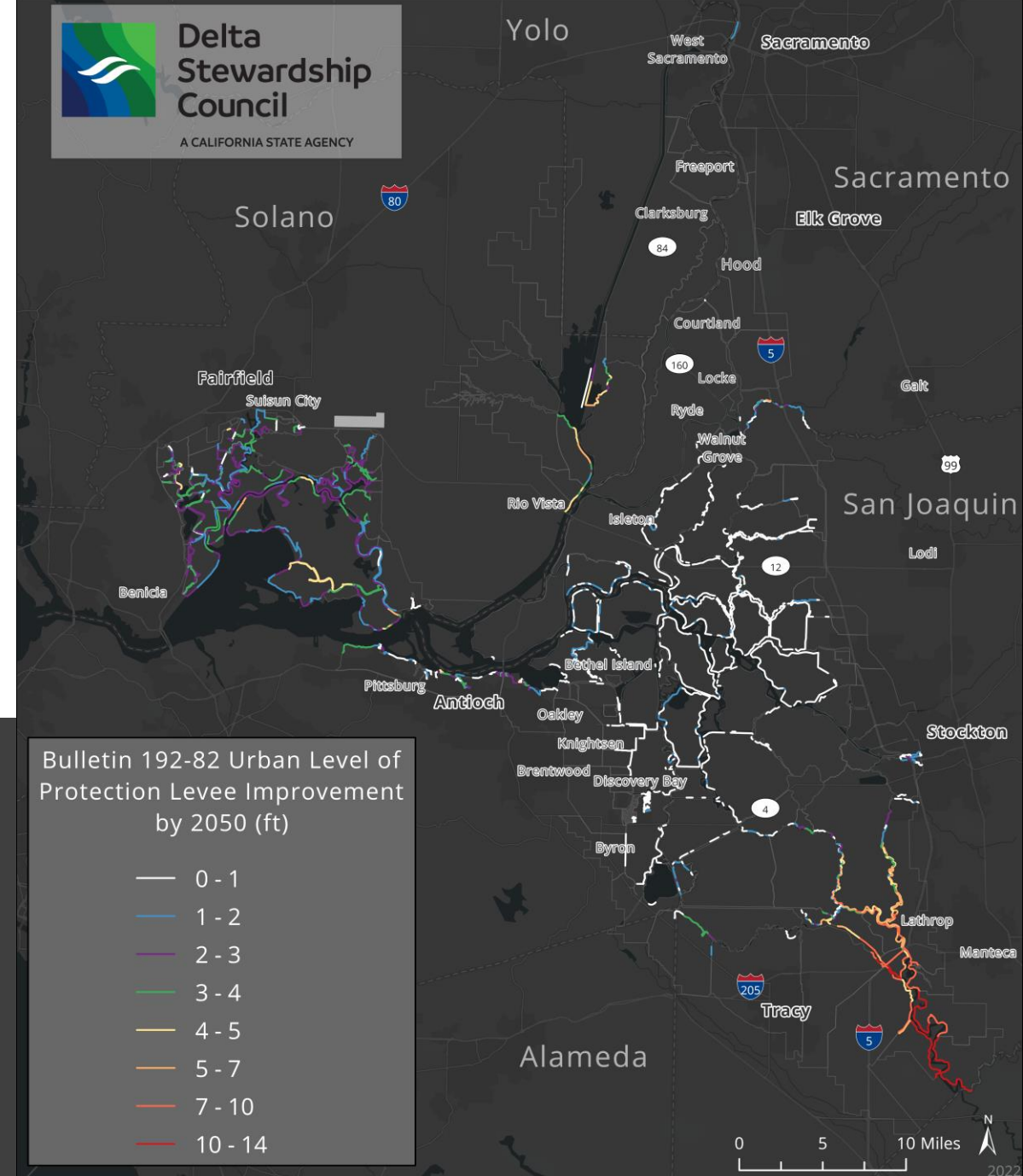
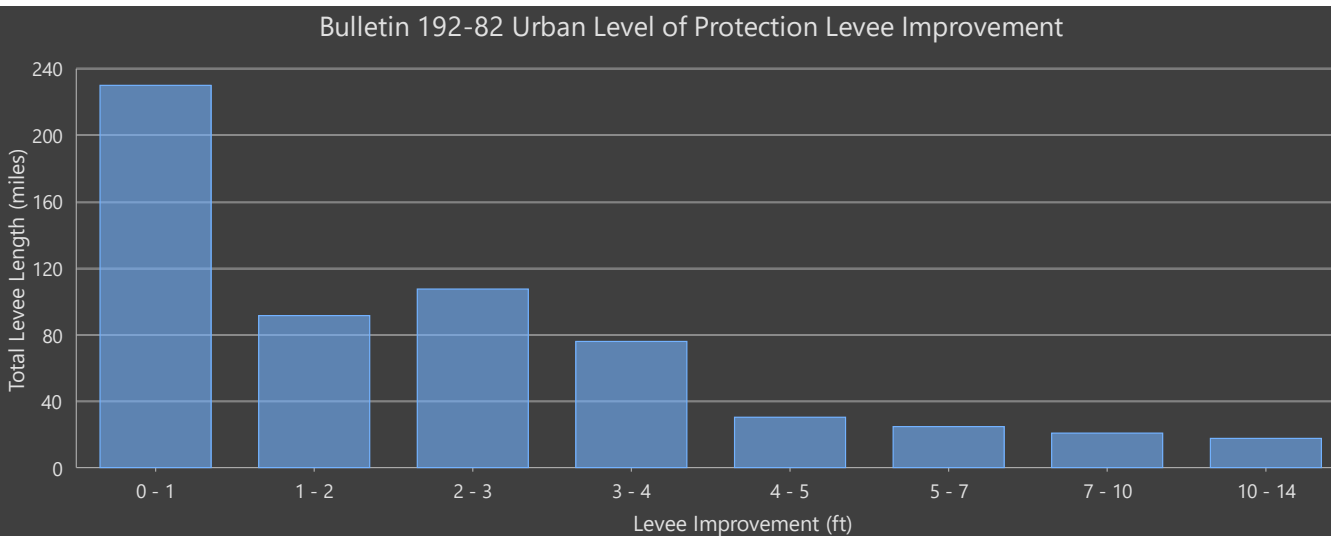
Island/Tract Asset Level of Protection



Levee Improvement – Asset Level

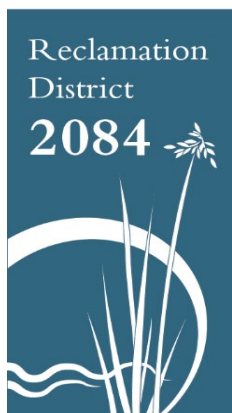


Levee Improvement – Bulletin 192-82



ENCLOSURE 6

AGENDA ITEM 9.a



FINANCIAL MANAGER'S REPORT

Reclamation District 2084 Board of Directors

As of June 30th 2022

Paid Invoices \$223,676.27	Invoices Pending \$25,542.44	Total Invoiced \$249,218.71
Current Budget \$532,459.00	Less Invoice total \$249,218.71	Budget Balance \$283,240.29
Revenue Budget \$351,223.32	Less Invoice total \$249,218.71	Project Balance \$102,004.61

Action Item

Informational Only.

Revenue	Vendor	Invoice #	Date	Amount
1	CA - DWR	RD2084_2021_Subv.	5/26/2021	\$71,803.00

Expenses	Vendor	Invoice #	Date	Amount
1	Mayaco Marketing & Internet	18165	5/26/2022	\$30.00
2	Pacific Gas & Electric	5072022	6/8/2022	\$3,282.69
3A	GSRMA	GS2207100603	6/14/2022	\$6,384.00
3B*	GSRMA	GS2207100603	6/14/2022	-\$6,401.00
4	Miller Ag	780	5/8/2022	\$13,950.00
5	Board Member Harris	4-062022	6/17/2022	\$1,500.00
6	Board Member Harris	12	6/17/2022	\$1,200.00
7	Larsen Wurzel & Associates	1912000-0422	5/17/2022	\$5,596.75

Fiscal Impact

District Invoices # 1-7 were reviewed and found to be consistent with the contract and within budget. The total invoiced amount approved in June is \$25,542.44

* Payment invoice from April was an estimate, original check was voided and payment reissued for actual amount.

RECLAMATION DISTRICT 2084

Fiscal Year (FY) 2021-2022 (July 1st - June 30th)

REVENUES (Funds 100 and 200)		Initial Budget	Amended Amount	Current Budget	Revenues YTD	Current Receipts	Total Revenues
100100	Balance in Account (Carryover from 20/21)	\$ -	\$ -	\$ -	\$ -	\$ -	\$ -
100101A	Assessment to Landowner	\$ 328,071.00	\$ -	\$ 328,071.00	\$ 279,420.32	\$ -	\$ 279,420.32
100102	Five-Year Plan Funding	\$ -	\$ -	\$ -	\$ -	\$ -	\$ -
100103	Levee Subventions Program	\$ 211,388.00	\$ -	\$ 211,388.00	\$ -	\$ 71,803.00	\$ 71,803.00
TOTAL REVENUES (Funds 100 and 200)		\$ 539,459.00	\$ -	\$ 539,459.00	\$ 279,420.32	\$ 71,803.00	\$ 351,223.32

GO&A EXPENSES (Fund 100)		Initial Budget	Amended Amount	Current Budget	Prior Expenses	Current Expenses	Total Expenses
Personnel:							
100201	President/Trustees/Officers	\$ -	\$ -	\$ -	\$ -	\$ -	\$ -
100202	Support Staff	\$ -	\$ -	\$ -	\$ -	\$ -	\$ -
100203	Special Representatives	\$ 17,000.00		\$ 17,000.00	\$ 3,000.00	\$ 1,500.00	\$ 4,500.00
100204	Board Member Compensation [3]	\$ 8,000.00	\$ 16,000.00	\$ 24,000.00	\$ 8,665.79	\$ 1,200.00	\$ 9,865.79
Subtotal Personnel		\$ 25,000.00	\$ 16,000.00	\$ 41,000.00	\$ 11,665.79	\$ 2,700.00	\$ 14,365.79

Administrative Contract Services:							
100301a	Administrative Support	\$ 93,000.00	\$ -	\$ 93,000.00	\$ 44,743.75	\$ 5,596.75	\$ 50,340.50
100302a	Legal Support	\$ 20,000.00	\$ -	\$ 20,000.00	\$ 188.00	\$ -	\$ 188.00
100303a	Engineering Support	\$ 25,000.00	\$ -	\$ 25,000.00	\$ -	\$ -	\$ -
100303b	Engineering Support - Subventions [2]	\$ 37,500.00	\$ -	\$ 37,500.00	\$ 31,655.45	\$ -	\$ 31,655.45
100304	Accounting	\$ 6,900.00	\$ -	\$ 6,900.00	\$ 6,900.00	\$ -	\$ 6,900.00
100305	Public Information	\$ -	\$ -	\$ -	\$ -	\$ -	\$ -
100306	State Advocacy	\$ -	\$ -	\$ -	\$ -	\$ -	\$ -
100308	Five-Year Plan Development	\$ -	\$ -	\$ -	\$ 8,093.25	\$ -	\$ 8,093.25
100310	USACE Section 408 Funding	\$ 75,000.00	\$ (74,500.00)	\$ 500.00	\$ 500.00	\$ -	\$ 500.00
Subtotal Administrative Contract Services		\$ 257,400.00	\$ (74,500.00)	\$ 182,900.00	\$ 92,080.45	\$ 5,596.75	\$ 97,677.20

Services and Supplies (Excluding Consultant Expenses):							
100502	PO Box Renewal	\$ 210.00	\$ -	\$ 210.00	\$ 210.00	\$ -	\$ 210.00
100505	Website & Hosting	\$ 360.00	\$ -	\$ 360.00	\$ 3,012.50	\$ 30.00	\$ 3,042.50
100508a	FMA - Dues	\$ 90.00	\$ -	\$ 90.00	\$ -	\$ -	\$ -
100508b	ASFPM - Dues	\$ 160.00	\$ -	\$ 160.00	\$ -	\$ -	\$ -
100508c	CCVFCA - Dues	\$ 1,250.00	\$ -	\$ 1,250.00	\$ 1,179.00	\$ -	\$ 1,179.00
100510	Liability Insurance	\$ 6,401.00	\$ -	\$ 6,401.00	\$ -	\$ (17.00)	\$ (17.00)
100512	Bank Service Charges	\$ -	\$ -	\$ -	\$ 2.50	\$ -	\$ 2.50
100513	CA SWRCB Annual Fee	\$ -	\$ -	\$ -	\$ 277.00	\$ -	\$ 277.00
Subtotal Services / Supplies		\$ 8,471.00	\$ -	\$ 8,471.00	\$ 4,681.00	\$ 13.00	\$ 4,694.00
TOTAL GO&A EXPENSES (Fund 100):		\$ 290,871.00	\$ (58,500.00)	\$ 232,371.00	\$ 108,427.24	\$ 8,309.75	\$ 116,736.99

O&M EXPENSES (Fund 200):							
200200	Levee Slope/Bench Mowing [2]	\$ 12,888.00	\$ -	\$ 12,888.00	\$ -	\$ -	\$ -
200201	Rodent Control [2]	\$ 10,000.00	\$ -	\$ 10,000.00	\$ -	\$ -	\$ -
200202	Levee Top & Access Road Maintenance [2]	\$ 50,000.00	\$ 16,500.00	\$ 66,500.00	\$ 51,434.37	\$ -	\$ 51,434.37
200203	Drainage Channel Clearing	\$ 15,000.00	\$ -	\$ 15,000.00	\$ -	\$ -	\$ -
200204	Pump Station O&M	\$ 20,000.00	\$ -	\$ 20,000.00	\$ 3,085.03	\$ -	\$ 3,085.03
200205	Electrical Power	\$ 35,000.00	\$ 35,000.00	\$ 70,000.00	\$ 48,993.63	\$ 3,282.69	\$ 52,276.32
200206	Misc. Supplies (pump oil, etc.)	\$ 1,000.00	\$ -	\$ 1,000.00	\$ -	\$ -	\$ -
200207	General Maintenance [2]	\$ 20,000.00	\$ -	\$ 20,000.00	\$ -	\$ -	\$ -
200208	Misc. O&M	\$ -	\$ -	\$ -	\$ -	\$ -	\$ -
200209	Brush Removal/Herbicide [2]	\$ 38,000.00	\$ -	\$ 38,000.00	\$ 2,885.00	\$ 13,950.00	\$ 16,835.00
200210	Emergency Monitoring/Gaging and Response [2]	\$ 20,000.00	\$ -	\$ 20,000.00	\$ -	\$ -	\$ -
200211	CDFW Routine Maintenance Agreement Permit	\$ 3,700.00	\$ -	\$ 3,700.00	\$ -	\$ -	\$ -
200212	Waterside Slope Maintenance [2]	\$ 23,000.00	\$ -	\$ 23,000.00	\$ 2,450.00	\$ -	\$ 2,450.00
TOTAL O&M EXPENSES (Fund 200):		\$ 248,588.00	\$ 51,500.00	\$ 300,088.00	\$ 108,848.03	\$ 17,232.69	\$ 126,080.72
TOTAL GO&A and O&M EXPENSES (Funds 100 and 200):		\$ 539,459.00		\$ 532,459.00	\$ 217,275.27	\$ 25,542.44	\$ 242,817.71

Current Budget	Revenue Received	Total Expenses YTD	Revenue less Expenses	Budget less Expenses
\$ 532,459.00	\$ 351,223.32	\$ 242,817.71	\$ 108,405.61	\$ 289,641.29

LEJPA			Budget	Revenues Received	Budget Remaining
100101B	Landowner Contributions (Revenue)	\$ 700,000.00	\$ -	\$ 567,914.68	\$ -
95111	Member Agency Assessment (LEJPA)	\$ 700,000.00	\$ -	\$ 567,914.68	\$ -

[1] RD 2084 will be eligible for subvention funding for FY 21-22 expenses. State Reimbursements are assumed to occur in June of the following fiscal year.

[2] Expenses assumed eligible for State Subventions funding. Based on conversation with MBK.

[3] Includes expense reimbursements for RD2084 and LEJPA activities.

Invoice 1

MAYACO MARKETING & INTERNET

6333 Pacific Ave., #521
Stockton,CA. 95207

Invoice

DATE	INVOICE NO.
5/26/2022	18165

BILL TO

Reclamation District No. 2084
Madeline Baker, PE, CFM
Larsen Wurzel & Associates, Inc.
2450 Venture Oaks Way, Ste 240
Sacramento, CA 95833

TERMS
Net 15

DESCRIPTION		AMOUNT
Monthly web site hosting of rd2084org per agreement.		30.00
It's a pleasure working with you!		Total 30.00
Payments/Credits	\$0.00	Balance Due 30.00

Invoice 2



ENERGY STATEMENT

www.pge.com/MyEnergy

Account No: 1966226048-8
Statement Date: 06/08/2022
Due Date: 06/27/2022

Service For:

RECLAMATION DISTRICT 2084
Please see details page.

Questions about your bill?

Agricultural Specialist available:
Mon-Fri: 7am to 6pm
1-877-311-3276
www.pge.com/MyEnergy

Ways To Pay

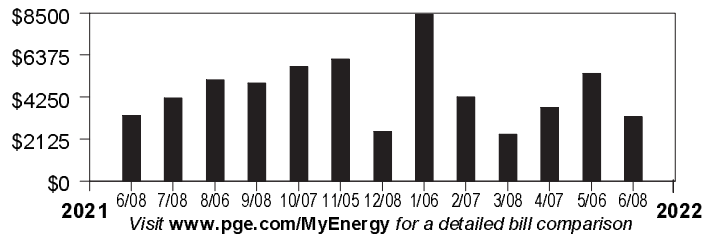
www.pge.com/waystopay

Your Account Summary

Amount Due on Previous Statement	\$9,201.79
Payment(s) Received Since Last Statement	-3,748.08
Previous Unpaid Balance	\$5,453.71
Current PG&E Electric Delivery Charges	\$2,216.38
MCE Electric Generation Charges	1,066.31

Total Amount Due by 06/27/2022	\$8,736.40
---------------------------------------	-------------------

Electric Monthly Billing History



Important Messages

Your charges on this page are separated into delivery charges from PG&E and generation or procurement charges from an energy provider other than PG&E. These two charges are for different services and are not duplicate charges.

Please return this portion with your payment. No staples or paper clips. Do not fold. Thank you.

99901966226048800003282690000873640



Account Number: 1966226048-8 Due Date: 06/27/2022 Total Amount Due: \$8,736.40

Amount Enclosed:

\$

RECLAMATION DISTRICT 2084
PO BOX 698
RIO VISTA, CA 94571-0698

PG&E
BOX 997300
SACRAMENTO, CA 95899-7300



ENERGY STATEMENT

www.pge.com/MyEnergy

Account No: 1966226048-8
Statement Date: 06/08/2022
Due Date: 06/27/2022

Important Phone Numbers - Monday-Friday 7 a.m.-7 p.m., Saturday 8 a.m.-5 p.m.

Customer Service (All Languages; Relay Calls Accepted) 1-800-743-5000 TTY 7-1-1

Servicio al Cliente en Español (Spanish) 1-800-660-6789
華語客戶服務 (Chinese) 1-800-893-9555

Dịch vụ khách tiếng Việt (Vietnamese) 1-800-298-8438
Business Customer Service 1-800-468-4743

Rules and rates

You may be eligible for a lower rate. Find out about optional rates or view a complete list of rules and rates, visit www.pge.com or call 1-800-743-5000.

If you believe there is an error on your bill, please call 1-800-743-5000 to speak with a representative. If you are not satisfied with our response, contact the California Public Utilities Commission (CPUC), Consumer Affairs Branch (CAB), 505 Van Ness Avenue, Room 2003, San Francisco, CA 94102, 1-800-649-7570 or 7-1-1 (8:30 AM to 4:30 PM, Monday through Friday) or by visiting www.cpuc.ca.gov/complaints/.

To avoid having service turned off while you wait for the outcome of a complaint to the CPUC specifically regarding the accuracy of your bill, please contact CAB for assistance. If your case meets the eligibility criteria, CAB will provide you with instructions on how to mail a check or money order to be impounded pending resolution of your case. You must continue to pay your current charges while your complaint is under review to keep your service turned on.

If you are not able to pay your bill, call PG&E to discuss how we can help. You may qualify for reduced rates under PG&E's CARE program or other special programs and agencies may be available to assist you. You may qualify for PG&E's Energy Savings Assistance Program which is an energy efficiency program for income-qualified residential customers.

Important definitions

Rotating outage blocks are subject to change without advance notice due to operational conditions.

Demand charge: Many non-residential rates include a demand charge. Demand is a measurement of the highest usage of electricity in any single fifteen (or sometimes five) minute period during a monthly billing cycle. Demand is measured in kilowatts (or kW). High demand is usually associated with equipment start-up. By spreading equipment start-ups over a longer period of time, you may be able to lower demand and reduce your demand charges.

Time-of-use electric prices are higher every day during afternoons and evenings, and lower at other times of the day. Prices also change by season, with higher prices in the summer and lower prices in the winter.

Wildfire Fund Charge: Charge on behalf of the State of California Department of Water Resources (DWR) to fund the California Wildfire Fund. For usage prior to October 1, 2020, this charge included costs related to the 2001 California energy crisis, also collected on behalf of the DWR. These charges belong to DWR, not PG&E.

Power Charge Indifference Adjustment (PCIA): The PCIA is a charge to ensure that both PG&E customers and those who have left PG&E service to purchase electricity from other providers pay for the above market costs for electric generation resources that were procured by PG&E on their behalf. 'Above market' refers to the difference between what the utility pays for electric generation and current market prices for the sale of those resources. Visit www.pge.com/ccca.

Wildfire Hardening Charge: PG&E has been permitted to issue bonds that enable it to recover more quickly certain costs related to preventing and mitigating catastrophic wildfires, while reducing the total cost to its customers. Your bill for electric service includes a fixed recovery charge called the Wildfire Hardening Charge that has been approved by the CPUC to repay those bonds. The right to recover the Wildfire Hardening Charge has been transferred to a separate entity (called the Special Purpose Entity) that issued the bonds and does not belong to PG&E. PG&E is collecting the Wildfire Hardening Charge on behalf of the Special Purpose Entity.

Recovery Bond Charge/Credit: Your bill for electric service includes a charge that has been approved by the CPUC to repay bonds issued for certain costs related to catastrophic wildfires. Separately, a PG&E trust provides a customer credit equal to the charge for customers. Visit www.pge.com/billexplanation for additional details on charge item.

Gas Public Purpose Program (PPP) Surcharge. Used to fund state-mandated gas assistance programs for low-income customers, energy efficiency programs, and public-interest research and development.

Visit www.pge.com/billexplanation for more definitions. To view most recent bill inserts including legal or mandated notices, visit www.pge.com/billinserts.

See the table reflecting "Your Electric Charges Breakdown" on the last page

"PG&E" refers to Pacific Gas and Electric Company, a subsidiary of PG&E Corporation. © 2022 Pacific Gas and Electric Company. All rights reserved.

Please do not mark in box. For system use only.

Update My Information (English Only)

Please allow 1-2 billing cycles for changes to take effect

Account Number: 1966226048-8

Change my mailing address to: _____

City _____ State _____ ZIP code _____
Primary Phone _____ Primary Email _____

Ways To Pay

- **Online via web or mobile at www.pge.com/waystopay**
- **By mail:** Send your payment along with this payment stub in the envelope provided.
- **By debit card, Visa, MasterCard, American Express, or Discover:** Call 877-704-8470 at any time. (Our independent service provider charges a fee per transaction.)
- **At a PG&E payment center or local office:** To find a payment center or local office near you, please visit www.pge.com or call 800-743-5000. Please bring a copy of your bill with you.



ENERGY STATEMENT

www.pge.com/MyEnergy

Account No: 1966226048-8
Statement Date: 06/08/2022
Due Date: 06/27/2022

Summary of your energy related services

	Meter Number	Usage	Amount
Service For: RIO VISTA .2 MI N/R YER			
Service Agreement ID: 1969871128			
PG&E Electric Delivery Charges	1009485877	5,591.920000 kWh	\$1,081.86
Service Agreement ID: 1962948866			
MCE Electric Generation Charges		5,591.920000 kWh	\$400.07
Total			\$1,481.93
Service For: NWILLOW RANCH			
Service Agreement ID: 1960301236			
PG&E Electric Delivery Charges	1008837252	7,124.706000 kWh	\$1,134.52
Service Agreement ID: 1962038152			
MCE Electric Generation Charges		7,124.706000 kWh	\$666.24
Total			\$1,800.76



ENERGY STATEMENT

www.pge.com/MyEnergy

Account No: 1966226048-8
Statement Date: 06/08/2022
Due Date: 06/27/2022

Details of PG&E Electric Delivery Charges

05/02/2022 - 05/31/2022 (30 billing days)

Service For: RIO VISTA .2 MI N/RYER

Service Agreement ID: 1969871128

Rate Schedule: AGC Ag35+ kW High Use

05/02/2022 – 05/31/2022

Customer Charge	30 days @ \$1.43343	\$43.00
Demand Charge ¹		
Max Demand	47.680000 kW @ \$12.69000	605.06
Energy Charges		
Peak	725.440000 kWh @ \$0.18022	130.74
Off Peak	4,866.480000 kWh @ \$0.15453	752.02
Generation Credit		-551.85
Power Charge Indifference Adjustment		98.19
Franchise Fee Surcharge		4.70

Total PG&E Electric Delivery Charges \$1,081.86

¹ Demand charges are prorated for the number of days in each rate period

2019 Vintaged Power Charge Indifference Adjustment

Average Daily Usage (kWh / day)

Last Year	Last Period	Current Period
388.34	458.89	186.40

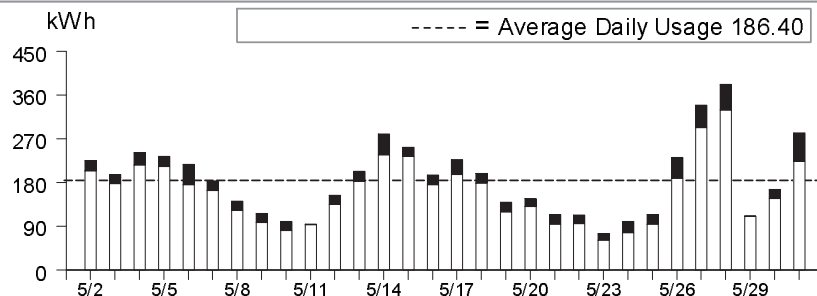
Service Information

Meter #	1009485877
Total Usage	5,591.920000 kWh
Serial	H
Rotating Outage Block	50

Additional Messages

From March 1, 2022 to February 28, 2023, the Wildfire Fund Charge is offset by \$0.00109/kWh to reflect excess funds from the Department of Water Resources (DWR) Bond charge. The Wildfire Fund Charge is also offset by an additional \$0.00084/kWh during this same period for excess funds from the DWR Power charge. These charges were included in your electric charges prior to 2021 and were related to bonds issued and energy provided to customers by DWR during the 2000-2001 California energy crisis.

Electric Usage This Period: 5,591.920000 kWh, 30 billing days



	Usage	Energy Charges
■ Peak ¹	12.97%	\$130.74
□ Off Peak ²	87.03%	\$752.02

¹Peak: Year-round, Daily, 5:00pm-8:00pm;

²Off Peak: All Other Hours



ENERGY STATEMENT

www.pge.com/MyEnergy

Account No: 1966226048-8
Statement Date: 06/08/2022
Due Date: 06/27/2022

Details of MCE Electric Generation Charges

05/02/2022 - 05/31/2022 (30 billing days)

Service For: RIO VISTA .2 MI N/R/YER

Service Agreement ID: 1962948866 ESP Customer Number: 1969871128

05/02/2022 – 05/31/2022

Rate Schedule: AG-C

Generation - Off Peak - Winter	4,866.480000 kWh @ \$0.06800	\$330.92
Generation - On Peak - Winter	725.440000 kWh @ \$0.09300	67.47
	Net Charges 398.39	
Energy Surcharge		1.68

Total MCE Electric Generation Charges

\$400.07

For questions regarding charges on this page, please contact:

MCE
1-888-632-3674
info@mcecleanenergy.org

Additional Messages

MCE is a not-for-profit, public agency that sources 60-100% renewable energy for your electricity supply.

MCE's generation charges replace what PG&E would otherwise charge you for electric generation. These charges are refunded to you in the 'Generation Credit' line on the 'Details of PG&E Electric Delivery Charges' page of your statement. PG&E continues to provide electric delivery and billing services. Gas services are not provided by MCE.

If you have any questions about MCE, please visit us online at www.mceCleanEnergy.org, or visit our local offices at:

MCE
1125 Tamalpais Avenue
San Rafael, CA 94901
or
MCE
2300 Clayton Road, Suite 1150
Concord, CA 94520

We're happy to help!

MCE is committed to protecting our customer privacy. Learn more about our privacy policy at mceCleanEnergy.org/privacy.



ENERGY STATEMENT

www.pge.com/MyEnergy

Account No: 1966226048-8
Statement Date: 06/08/2022
Due Date: 06/27/2022

Details of PG&E Electric Delivery Charges

05/02/2022 - 05/31/2022 (30 billing days)

Service For: NWILLOW RANCH
Service Agreement ID: 1960301236
Rate Schedule: AGB Ag35+ kW Med Use

05/02/2022 – 05/31/2022

Customer Charge	30 days @ \$0.91565	\$27.47
Demand Charge ¹		
Max Demand	16.712000 kW @ \$7.07000	118.15
Energy Charges		
Peak	879.646480 kWh @ \$0.26750	235.31
Off Peak	6,245.059520 kWh @ \$0.23824	1,487.82
Generation Credit		-865.32
Power Charge Indifference Adjustment		125.11
Franchise Fee Surcharge		5.98

Total PG&E Electric Delivery Charges \$1,134.52

¹ Demand charges are prorated for the number of days in each rate period

2019 Vintaged Power Charge Indifference Adjustment

Average Daily Usage (kWh / day)

Last Year	Last Period	Current Period
52.69	243.12	237.49

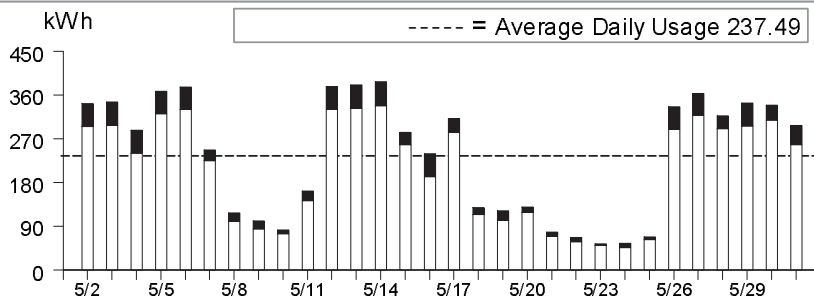
Service Information

Meter #	1008837252
Total Usage	7,124.706000 kWh
Serial	R
Rotating Outage Block	50

Additional Messages

From March 1, 2022 to February 28, 2023, the Wildfire Fund Charge is offset by \$0.00109/kWh to reflect excess funds from the Department of Water Resources (DWR) Bond charge. The Wildfire Fund Charge is also offset by an additional \$0.00084/kWh during this same period for excess funds from the DWR Power charge. These charges were included in your electric charges prior to 2021 and were related to bonds issued and energy provided to customers by DWR during the 2000-2001 California energy crisis.

Electric Usage This Period: 7,124.706000 kWh, 30 billing days



	Usage	Energy Charges
■ Peak ¹	12.34%	\$235.31
□ Off Peak ²	87.66%	\$1,487.82

¹Peak: Year-round, Daily, 5:00pm-8:00pm;

²Off Peak: All Other Hours



ENERGY STATEMENT

www.pge.com/MyEnergy

Account No: 1966226048-8
Statement Date: 06/08/2022
Due Date: 06/27/2022

Details of MCE Electric Generation Charges

05/02/2022 - 05/31/2022 (30 billing days)

Service For: NWILLOW RANCH

Service Agreement ID: 1962038152 ESP Customer Number: 1960301236

05/02/2022 – 05/31/2022

Rate Schedule: AG-B

Generation - Off Peak - Winter	6,245.059500 kWh @ \$0.09000	\$562.06
Generation - On Peak - Winter	879.646500 kWh @ \$0.11600	102.04
	Net Charges 664.10	
Energy Surcharge		2.14

Total MCE Electric Generation Charges

\$666.24

For questions regarding charges on this page, please contact:

MCE
1-888-632-3674
info@mcecleanenergy.org

Additional Messages

MCE is a not-for-profit, public agency that sources 60-100% renewable energy for your electricity supply.

MCE's generation charges replace what PG&E would otherwise charge you for electric generation. These charges are refunded to you in the 'Generation Credit' line on the 'Details of PG&E Electric Delivery Charges' page of your statement. PG&E continues to provide electric delivery and billing services. Gas services are not provided by MCE.

If you have any questions about MCE, please visit us online at www.mceCleanEnergy.org, or visit our local offices at:

MCE
1125 Tamalpais Avenue
San Rafael, CA 94901
or
MCE
2300 Clayton Road, Suite 1150
Concord, CA 94520

We're happy to help!

MCE is committed to protecting our customer privacy. Learn more about our privacy policy at mceCleanEnergy.org/privacy.



ENERGY STATEMENT

www.pge.com/MyEnergy

Account No: 1966226048-8
Statement Date: 06/08/2022
Due Date: 06/27/2022

Your Electric Charges Breakdown (from page 2)

Transmission	\$403.51
Distribution	1,329.34
Electric Public Purpose Programs	228.42
Nuclear Decommissioning	-1.64
Wildfire Fund Charge	58.37
Wildfire Hardening Charge	16.28
Competition Transition Charges (CTC)	2.67
Energy Cost Recovery Amount	-54.55
PCIA	223.30
Taxes and Other	10.68
Total Electric Charges	\$2,216.38

Invoice 3



INVOICE

Account No.: RECDIS2084

Policy Period: 07/01/2022 to 07/01/2023

Annual Pay Plan

Prepared For: Reclamation District No. 2084
Attn: Accounts Payable
P.O. Box 698
Rio Vista, CA 94571

Customer Service

For information on
your Account visit www.gsrma.org

Mail Payments
and all other
inquiries to GSRMA
PO Box 706
Willows, CA 95988

Phone 530-934-5633
FAX 530-934-8133

Page 1 of 1

Billing Cycle and Payment Information

Statement Date	Payment Terms	Delinquent After	To Pay in Full	Amount Due This Invoice
07/01/2022	Due and Payable Upon Receipt.	07/16/2022	\$6,384.00	\$6,384.00

Billing Information

07/01/2022	GL Dividend	-17.00
07/01/2022	General Liability Contribution	1,000.00
07/01/2022	Property Contribution	5,390.00
07/01/2022	Crime/Bond Contribution	11.00
Balance		6,384.00

GSRMA accepts ACH payments - contact financedept@gsrma.org for details

Please cut on dashed line to detach and return with payment.

Important Information

Please make all checks payable to: Golden State Risk Management Authority
To ensure proper credit, be sure to write your account number on your check.

Prepared For: Reclamation District No. 2084

Mail this payment coupon along with a check or money order payable to:

Golden State Risk Management Authority
PO Box 706
Willows, CA 95988



Payment Information

Account Number: RECDIS2084
Invoice Number: GS2207100603
Payment Due Date: 07/01/2022
Minimum Due: \$6,384.00
To Pay in Full: \$6,384.00

Amount Paid: \$ _____

Invoice 4



Miller Ag

2064 Beckett Dr
El Dorado Hills, CA 95762
916-296-2811

Invoice No.

780

INVOICE

Customer

Name Westervelt - Attn Mark Young
Address 600 North Market Blvd Suite 3
City Sacramento State CA ZIP 95834
Phone _____

Date 5/8/2022
Order No. _____
Rep _____
FOB _____

Qty	Description	Unit Price	TOTAL
	Little Egbert Tract Rec Dist 2084		
	Levee and main roads along top and bottom of system Sparyed a post and pre mix 82 hours work Made treatments in January with no rain resprayed in April Chenical cost for materials used per quote	\$75.00	\$6,150.00 \$7,400.00
	Materials used		
40 gal	cheeta Pro		
10 gal	Milestone		
4 gal	Esplanade		
10 gal	Liberate		
50 gal	Roundup		
1	Mobility cost		\$400.00
SubTotal			\$13,950.00
Shipping & Handling			
Taxes			
TOTAL			\$13,950.00

Payment Details

- ☐ _____
☐ Credit to Branch
☒ 531 Miller Mgt 0

SubTotal	\$13,950.00
Shipping & Handling	
Taxes	
TOTAL	\$13,950.00

Office Use Only

Miller AG 2064 Beckett Dr. El Dorado Hills, CA 95762
All invoices are due upon receipt...

The Best People. The Best Products. The Best Service

Invoice 5

DATE: June 15, 2022
Invoice #: 04-062022

Bill To:

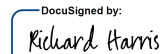
Reclamation District No. 2084

PO Box 698
Rio Vista, CA 94571
Email: info@RD2084.org


DESCRIPTION	AMOUNT
Trustee Harris - LEJPA Member Agency Representative stipend for JUNE 2022	1,500.00
TOTAL	\$ 1,500.00

I concur with the above agency assessment and by signing I certify my eligibility for this payment commensurate with the revised Compensation Policy enacted March 3, 2022.

Signed:

DocuSigned by:

Richard Harris
Trustee, RD 2084
6/15/2022
Date Signed

Approved By:

DocuSigned by:

Mark Young
President, RD 2084
6/17/2022
Date Approved

Invoice 6

Trustee Compensation Request Form

Trustee Name: Richard Harris

For Period: Apr. - June 2022

Date of Event	Event Description (include whom you met with, duration of event, round trip miles driven, and location of event)	Tele conf. (Y/N)	Meeting Compensation	Expenses (itemized)		Total event compensation
				Description	Amount (\$)	
7-Apr	RD 2084 Board meeting. 1 Hour	y	\$150			\$150
4-Apr	LEJPA Board meeting. 1 Hour	Y	\$150			\$150
11-May	LEJPA Special Board meeting. 1/2 Hour	y	\$150			150
26-May	LEMBP Coordination meeting. 3/4 hour	y	\$150			150
31-May	Agenda setting meeting for LEJPA	y	\$150			150
2-Jun	RD 2084 Board meeting. 1 Hour	y	\$150			150
6-Jun	LEJPA Board meeting. 1 Hour	y	\$150			150
13-Jun	LEMBP Coordination meeting. 1 hour	y	\$150			150

Total: 1200

Trustee Signature:  A8DB416CF1674FA...

Date Signed: 6/15/2022

Approved by:  E85ECDA2A34549E...

Approval Date: 6/17/2022

Invoice 7



Larsen Wurzel & Associates, Inc.

2450 Venture Oaks Way, Suite 240
Sacramento, CA 95833
Phone (530) 665-8222 Fax (530) 406-1335

INVOICE

DATE: February 17, 2022
INVOICE # 1912000-0122
FOR: RD 2084 Little
Egbert Tract

BILL TO:

Reclamation District 2084
Attn: Mark Young
PO Box 698
Rio Vista, CA 94571

Professional Services: From **January 1, 2022** through **January 31, 2022**

Contract Term: 11/01/2019 to 6/30/2022

DATE	DESCRIPTION	HOURS	RATE	AMOUNT
1/31/2022	1912120: RD 2084 Administration			
	Principal: Eric Nagy	2.25	\$245.00	\$551.25
1/31/2022	Associate Project Manager: Madeline Baker	11.50	\$223.00	\$2,564.50
	1912130: RD 2084 Financial Management			
1/31/2022	Senior Analyst: Jeff Brown	4.75	\$167.00	\$793.25
1/31/2022	Direct Expenses			\$18.25
SUBTOTAL TASK 1912120				\$3,115.75
SUBTOTAL TASK 1912130				\$811.50
TOTAL				\$3,927.25

Signature: _____

Thank you for the opportunity to serve you!

Please make all checks payable to **Larsen Wurzel & Associates, Inc.**

Payment Due by 3/18/2022

Budget Summary:	Amount	% of Total
Contract Amount 1912000	\$145,488.00	
Amendment No. 1	\$179,100.00	
Amendment No. 2	\$81,264.00	
Amendment No. 3	\$91,320.00	
Total Contract Amount	<u>\$497,172.00</u>	
Current Billings	\$3,927.25	0.8%
Prior Billings	<u>\$434,136.96</u>	87.3%
Total to Date	\$438,064.21	88.1%
Remaining Contract Authorization	\$59,107.79	11.89%